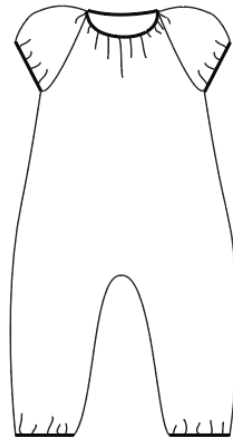
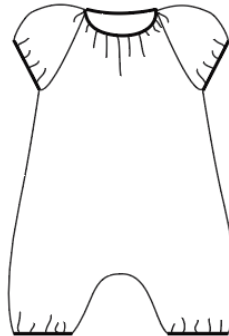
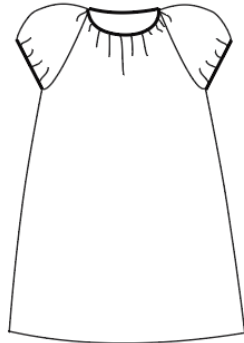
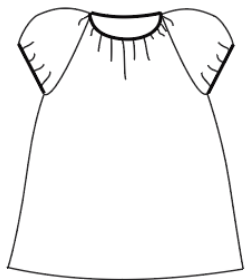




Made by Runi

Every Day Singoalla

Singoalla with several alternatives; dress, shirt, and jumpsuit with several pant lengths
Sizes 50-134



This pattern is copyrighted by Made by Runi with all rights reserved.
You may print out this pattern for your own use. You are not allowed to sell, trade, or share this pattern in any form. You are not allowed to duplicate this pattern or PDF to share. Selling finished products made from this pattern is permitted on a small scale.

Made by Runi ©2020

Before you begin:

Read through everything before you start.

Seam allowance is not included, add a seam allowance where two parts are sewn together.

I add a 6mm seam allowance because I use an overlock with a seam that is 5mm bred. Stretch fabrics such as cotton jersey are recommended for this pattern.

Pre-wash all fabrics in order to account for shrinkage and to prevent colour-bleeding.

Measure the test square on the first page of the pattern to ensure that it has been printed out correctly.

It should be exactly 4x4 cm (or 2x2")

Use the latest version of Adobe Reader.

You need:

Sewing machine

Scissors

Thread

Sewing needle suitable for the fabric you choose (for in the sewing machine)

Wonder clips or pins

Fabric

Measuring tape

Elastic 1-2 cm wide depending on size

Fabric requirements:

The pattern does not include seam allowance. Fabric requirements are based on fabric with a width of 150cm. Remember to factor in your seam allowance and shrinking of your fabric when ordering fabric. In addition to this, elastic will be needed for the neckline and eventual leg cuffs.

Storlek/size	Dress
50-68	40cm
74-92	50cm
98-116	60cm
122-128	70cm
134	75cm

Storlek/size	Top
50-62	30cm
68-92	40cm
98-128	50cm
134	55cm

Storlek/size	JS short
50-80	50cm
92-104	60cm
110-128	70cm
134	75cm

Storlek/size	JS long
50-68	60cm
74-86	70cm
92	80cm
98-104	90cm
110-116	100cm
122-128	110cm
134	115cm

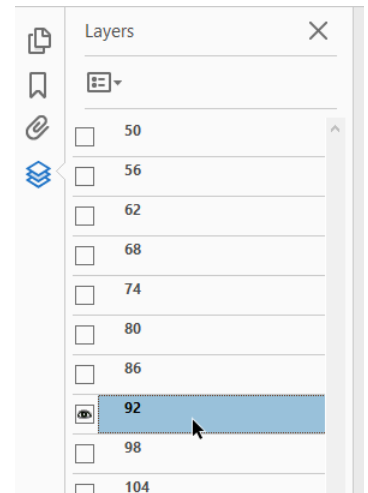
JS = Jumpsuit

Storlek/size	Ärm / Sleeve
All	15-20cm

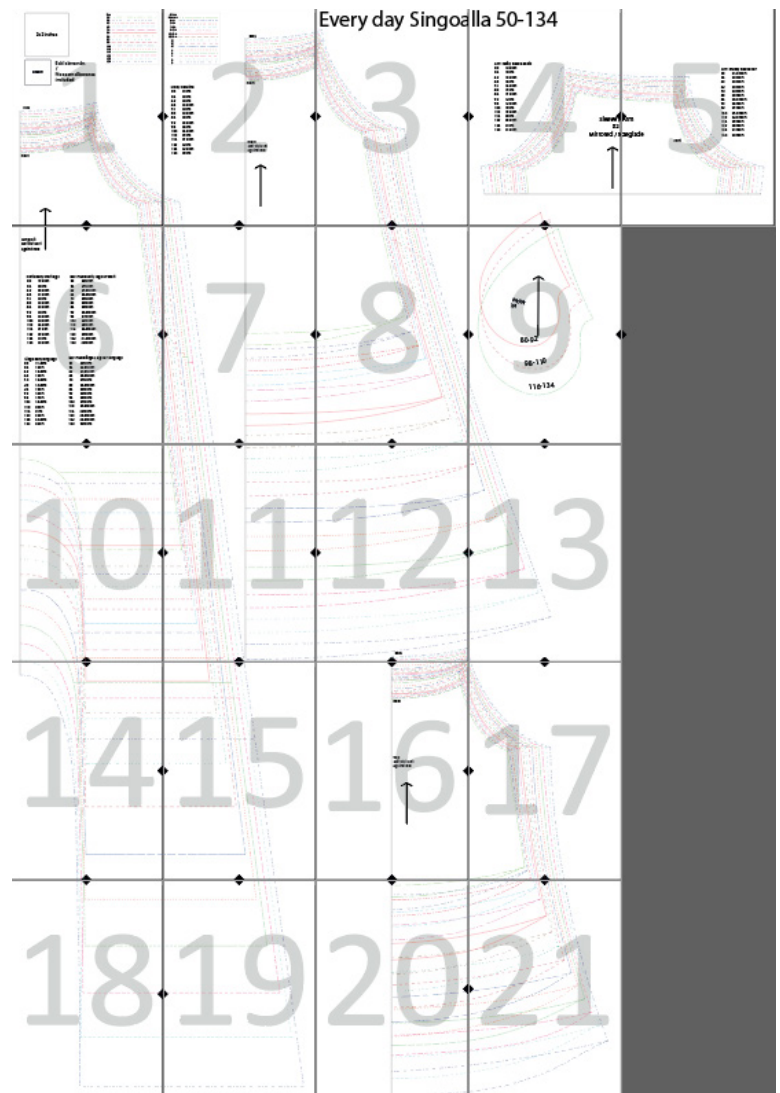
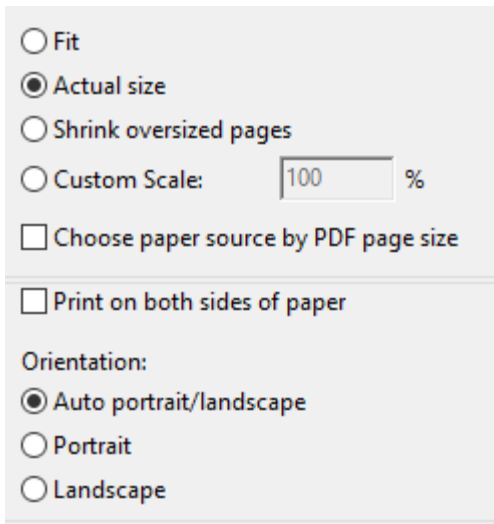
It is possible to print out specific sizes using the “layers” function in acrobat.

Select the “Layers” tab.

Deselect the sizes you do not want to print, but leave the last layers in the list selected.



When printing, make sure your printer settings are set to “Actual Size” and “Auto portrait/landscape”. The file can be printed on A4 or Letter



Tape the pattern together as shown in the image to the right.

Tip: Cut off the top and left edges of each page. Match up the lines and the triangles on each page so that they become diamonds.

Do not cut out any of the pattern pieces before taping all of the pages together.

Size = Child's length in cm

Size	80	86	92	98	104
Chest	49	51	53	55	56
Waist	49	50	51	52	53
Hip	51	53	55	57	59
Leg Inseam	29,5	32,5	36,5	40	44
Size	110	116	122	128	134
Chest	58	59	61	64	67
Waist	54	55	56,5	58	59,5
Hip	61	63	66	69	72
Leg Inseam	47,5	51	55	58,5	62
Size	140	146	152	158	164
Chest	70	73	76	80	83
Waist	61,5	63	64,5	66	67,5
Hip	75	78,5	82	85,5	89
Leg Inseam	66	69	71,5	74	77



Made by Runi

More pictures of finished creations are posted regularly on:

Instagram: @madebyruni (please use #madebyruni when you post photos of your creations made with my patterns)

Facebook: <https://www.facebook.com/madebyruni/>
<https://www.facebook.com/groups/madebyruni>

All of my patterns are available to purchase at: www.madebyruni.com and several of them are available as printed patterns if you prefer.

To protect the environment, there are more tutorials for the different steps and options for my patterns available online at www.patternsbyruni.wordpress.com

Before you Begin

Choice of model

Several different models are included in this pattern.

There is a shirt, dress, and a jumpsuit with two different leg lengths.

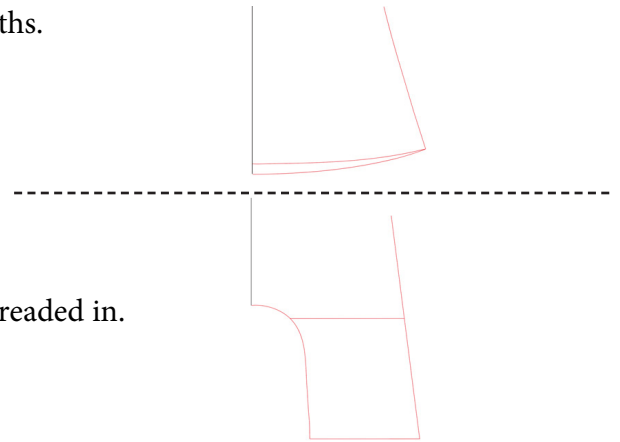
On the pattern sheet the alternatives for shirt and dress are on top of one another (see the photo).

Even the two alternatives for the jumpsuit's leg lengths are on top of one another on the pattern sheet.

The neckline is hemmed to create a channel for the elastic band.

Sleeve- and leg endings are finished with cuffs where elastic is threaded in.

There are also pockets as an optional detail.



Choice of Size

This is a loose sitting model where the child's height is the most important measurement. Use the size table and choose the size according to the child's height and chest measurements. For example, if the child is 121cm tall with a chest measurement of 59,5cm and a waist measurement of 56cm, you should sew size 122 in height with size 116 in width. For children shorter than 80 cm, use only the child's length.

Suitable material

This pattern is designed for tricot fabrics. The fabrics best suited for this pattern are thinner tricot fabrics, for example, jersey, viscose jersey, and bamboo lycra. All of the pieces should be sewn in the same material, including the cuffs. Ribbing material should NOT be used. You will also need elastic which is 1-2 cm wide.

Seam allowance and hem

The seam allowance and hem are NOT included in this pattern and must be added where you will sew. How much seam allowance you add depends on how far away from the fabric's edge you sew. It's very important to not add too much or too little seam allowance, because this will affect the size of the garment. For example, if you add 1 cm seam allowance when you cut out the pattern pieces and then sew only 0,7 cm from the edge, you're going to widen the garment by 6mm at every seam.

The seam allowance should be added to all places where you will be sewing two pieces together with a seam. Don't forget to add seam allowance to the pieces given as measurements on the pattern sheet. Account for and add a hem on the bottom edge of the shirt and the dress, and in the neckline of all the models to be able to sew an elastic channel.

Other

In this tutorial I'm going to sew a shirt and a jumpsuit with short legs and pockets. All of the steps which are needed to sew this pattern are included in this tutorial, but you can choose to sew other combinations, ie. Dress with pockets, or a long legged jumpsuit without pockets. Therefore it's best that you read through the entire tutorial before you begin.



Cut out the pieces

The pieces where it says against the fold should be placed against the edge of folded fabric when you cut them out. This is illustrated in the picture of the pattern piece of the back piece. Other pieces, such as the sleeves, should be cut out mirrored, illustrated in the photo of the pockets. You can do this by placing them on folded fabric. They do not need to be placed against a folded edge.

The seam allowance should be added to all places where you will be sewing two pieces together with a seam. Remember to also account for the hem and elastic channel.

Pieces

Back piece x1 (Cut out on folded fabric against the fold)

Front piece x1 (Cut out on folded fabric against the fold)

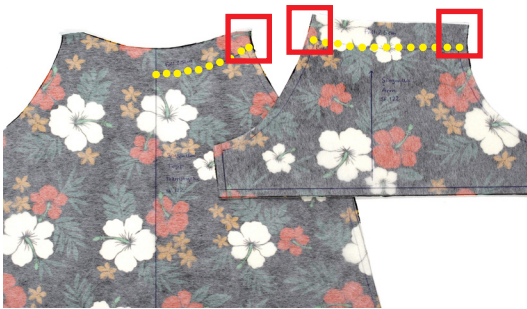
Sleeves x 2 (Mirrored, ie. One right and one left)

Cuffs x 2 (Cut according to the measurements specified on the pattern sheet)

Elastic for the neckline x 1 and for the sleeves x 2 (Cut according to the measurements specified on the pattern sheet), I'm using elastic which is 1.5cm-2cm wide.

Seam allowance and hem

On this pattern, you should add a seam allowance around all the pieces except for the neckline and the shirt/dress's bottom edge where a hem/elastic channel should be added. Since the neckline isn't straight it's important to think about adding a mirrored hem. The hem is the part which is over the yellow dashed line. I've marked the mirrored parts with red squares. It's important that the hem edges are mirrored, otherwise the hem won't fit inside when it's folded inward. I'm adding a 2.5 cm hem.



Sew the sleeves onto the back piece, ie. Sew the raglan seams

Start with sewing the sleeves onto the back piece.



Sew the sleeves onto the back piece, ie. Sew the raglan seams

Place the sleeve against the back piece, right sides together, pin the raglan seam, and sew where I've marked with clips. The sleeve is higher at the back than at the front, so the part of the sleeve which is higher should be pinned against the back piece.



Sew the sleeves onto the back piece, ie. Sew the raglan seams

This is how it looks once the sleeve is sewn onto the back piece.



Stitch down the seams

Optional.

To get beautiful flat seams, I stitch down the seam allowance by sewing a stretch stitch 4-5 mm from the edge between the sewn together pieces. I use a straight stretch stitch, but it works equally well to use ie. Twin needle, coverstitch, or a small zig zag. I sew on the right side, through the seam allowance which I pressed against the backside. I will do this continuously throughout the project.



Stitch down the seams

This is how it looks when the seams are stitched down. I've pressed the seam allowance against the front piece's wrong side and sewed it down from the right side.



Sew the sleeves onto the back piece, ie. Sew the raglan seams
Place the other sleeve against the back piece, right sides together, pin the raglan seam, and sew where I've marked with clips.



Sewn together
This is how it looks when both sleeves are sewn onto the back piece.

The next step is to sew the front piece onto one sleeve.



Sew the front piece onto the sleeve, ie. Sew the raglan seams
Place the front piece against the sleeve, right sides together, pin the raglan seam, and sew where I've marked with clips.



Sewn together
This is how it looks when the sleeves, front piece, and back piece are sewn together.



Sew the front piece onto the other sleeve, ie. Sew the last raglan seam
Place the front piece against the other sleeve, right sides together, pin the raglan seam, and sew where I've marked with clips.



Sewn together
This is how it looks when the sleeves, front piece, and back piece are sewn together with raglan seams.

The next step is to sew the side seams.



Sew the side seams

Place the front piece and the back piece on top of one another right side together. Pin the entire way from the beginning of the sleeve down to the shirt's bottom edge. Sew the side seams where I've marked with clips.



Sewn together

This is how it should look when all of the shirt's pieces are sewn together.



Sew the elastic channel

The next step is to hem the neckline/sew the elastic channel.



Sew the elastic channel – Fold the neckline’s hem

Fold up the neckline’s hem against the shirt’s wrong side. Hold it in place with pins or clips. I’m doing a 2.5 cm hem since I’m using an elastic which is 1.5 cm wide, and I’m going to hem it with a decorative stitch which is 0.7 cm wide.



Sew the elastic channel – Sew the hem, leave an opening for the elastic

Now we’re going to sew the hem. It is important to remember to leave an opening so that we can thread the elastic through the channel we’ve created. I’m leaving a 3 cm opening which I’ve marked out with pins (marked with a red square).



Sew the elastic channel - Sew the hem, leave an opening for the elastic

Sew the hem with your choice of stretch stitch, ie. zig zag, twin needle, decorative stitch, or coverstitch, 2.5 cm from the folded edges where I’ve marked with clips. Don’t forget to leave an opening for the elastic.



Sew the elastic channel – Sewn together

This is how it looks when the neckline's hem is sewn and a channel for the elastic thread has been made.



Sew the elastic channel – Thread the elastic through

Now we will thread the elastic through the channel. I think it's easier to use a piece of elastic that's a little bit longer than what I actually need. I've cut a piece that's ca 10 cm longer than the measurement given on the pattern sheet. I mark the elastic with a pen 5 cm from each end so that I know where I should sew together the elastic (marked with a red square).



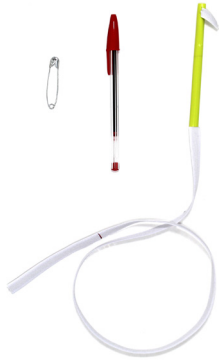
Thread the elastic through – Safety pin

There are many different tools to help you thread elastic through a channel which you can usually buy from well stocked fabric stores. I'll be showing you some different "tools" which one often has at home. Safety pins work well when you have to thread elastic through a channel. Just stick the needle through the elastic and close the safety pin. Be careful not to pinch the safety pin and open it as it passes through the channel.



Thread the elastic through – Pen with pen lid

A pen with a lid is also a great tool. Just make sure that the pen isn't too wide to be threaded through the channel. Simply clamp the elastic between the pen and the lid.



Thread the elastic through - Straw

You can even use a straw. I cut a straw so that it became approx. 10 cm lång. Then I made a jack at one end of the straw, approx. 1cm deep. Thread the elastic into the straw and attach it to the top by attaching it to the cut jack. Tweezers are a good tool for threading the elastic into the straw.



Sew the elastic channel - Thread the elastic through

Thread the elastic through the channel. Make sure you don't accidentally thread through the other end of the elastic, a few centimetres of both ends of the elastic should remain outside of the channel.



Sew the elastic channel - Thread the elastic through

Feel along the elastic so that it hasn't folded or twisted itself while it was being threaded through the channel.



Sew the elastic channel - Finish the elastic

Now the elastic will be sewn together so that it makes a circle. I place the markings that I made earlier on the elastic on top of each other and hold together the elastic with help of two clips.



Sew the elastic channel - Finish the elastic

Now I sew together my elastic at the marking. I'm using a straight stretch stitch but any stitch at all works well. Remember to fasten the thread well, and sew it a few times so that the stitches hold together well.



Sew the elastic channel – Cut away excess elastic

Cut away the excess bits of the elastic band (marked with a red square).

This is how the elastic looks when it's sewn together. Pull on it a little so that the entire elastic lands inside the channel.



Sew the elastic channel – Sew together the opening in the elastic channel

Sew together the opening in the elastic channel the same way as we did when we hemmed the neckline.



Sew the elastic channel – Sewn together

This is how the elastic looks when the neckline's elastic channel is complete.



Hem the shirt's bottom edge

The next step is to hem the shirt's bottom edge.



Hem the shirt's bottom edge – Fold up the hem

Fold up the hem against the shirt's wrong side. Håll fällen på plats med nålar eller clips. I'm using a 3 cm hem at the shirt's bottom edge.



Hem the bottom edge - Sew the hem

Sew the hem with your choice of stretch stitch, ie. zig zag, twin needle, decorative stitch, or coverstitch, 3 cm from the folded edges where I've marked with clips. On the shirt's bottom edge I use the sewing machine's free arm and sew the hem with the shirt right side out.



Sewn together

This is how the shirt looks when the bottom edge is hemmed.

The next step is to sew the sleeve cuffs.



Sew together the sleeve cuffs

On this shirt the sleeves will be finished with cuffs which act as elastic channels to get a drawn together sleeve ending. The cuffs themselves are just as long as the sleeve ending's opening, so it's important to not use ribbing, instead use the same material as the shirt. The elastic should be at least 1 cm wide in the smallest sizes, and up to 2 cm wide in the larger sizes (the length measurement is provided on the pattern sheet).



Sew together the cuffs – Sew the short sides

Fold the cuffs double, right sides together, so that the short sides meet up. Sew the cuffs together where I've marked with clips.



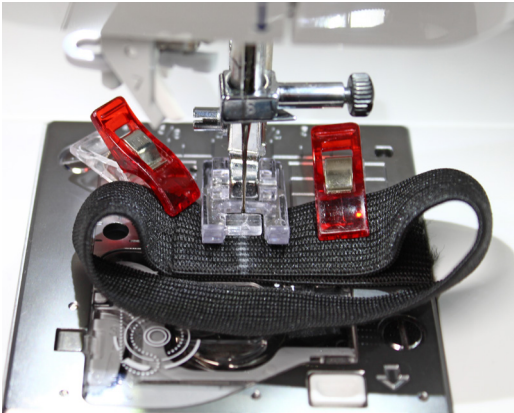
Sew together the cuffs – Fold the cuff

Now the cuffs should be folded so that the seams we just sewed end up on the inside of the folded cuffs. Fold the cuffs so that the long sides of the cuff edges meet up, ie. The cuff should be folded so that the inside is placed against the completed cuff's inside. The end result becomes a tube-formed, double-layered cuff with the right side out. In the photo, the upper sleeve cuff is folded, do the same for the other sleeve cuff. To distribute the sleeve cuff evenly when it's being sewn on, I usually mark the cuff in two equal parts with clips.



Sew together the cuffs – Finish the elastic into a circle

Just the same as we did for the elastic in the neckline, I cut the elastic a little longer than the measurement on the pattern piece and mark with a pen where the elastic will be sewn together (marked with red). I place the markings on the elastic I did earlier on top of each other and hold the elastic together with the help of two clips.



Sew together the cuffs - Finish the elastic into a circle

Now I sew together the elastic at the marking. I'm using a straight stretch stitch, but any stitch works just fine. Remember to fasten the thread well, and sew it a few times so that the stitches hold together well.

Sew together the two elastic pieces the same way.



Sew together the cuffs - Sewn together

Now both the cuffs and the elastics are finished into circles.



Sew together the cuffs - Sewn together

Now we'll place the elastics in the sleeve cuffs. The elastic should be placed against the cuff's wrong side, enveloped by the sleeve cuff. Since the elastic is a lot shorter than the sleeve cuff, it's important in the following steps to not pin or sew the elastic. The elastic should always be free inside the cuff because the elastic should be able to draw together the cuff evenly once it's sewn onto the shirt.



Sew on the cuffs - Mark the sleeve endings

The sleeve cuffs are divided into two and marked with clips. Do the same thing with the sleeve ending by placing a clip in the side seam and one parallel to the first clip.



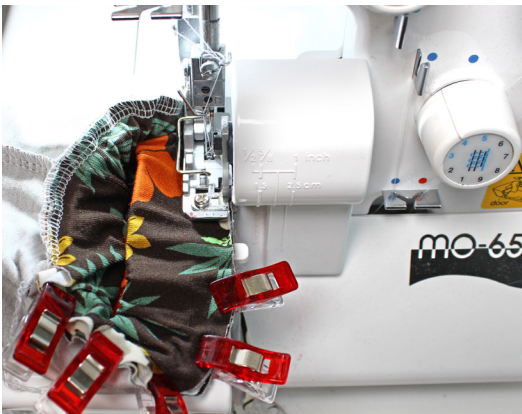
Sew on the cuffs – Pin the cuffs

Place the cuff inside the shirt so that the edge ends up right sides together against the edge of the sleeve ending. Pin it together by matching the markings we did earlier on the cuff and the sleeve ending.



Sew on the cuffs - Pin the cuffs

Attach some extra extra clips/pins to get the cuff evenly divided. The cuff is the same length as the sleeve ending's opening, while the elastic is shorter. It's important to not pin the elastic, it should be able to move freely inside the cuff. Sew the cuff where I've marked with clips.



Sew on the cuffs - Pin the cuffs

When the cuff is being sewn it's important that the elastic doesn't get caught in the seam, it should be able to move freely.



Finished

The fabrics used for this shirt come from Made by Runi.

The sewing machines used for this tutorial are from JUKI Sverige.

Tutorial created by: Helena Persson, Skurkan

Tutorial translated by: Jenna Lee Iwanchuk



Pieces

Front piece x1 (Cut out on folded fabric against the fold)

Pockets x 2 (Mirrored, ie. One right and one left)

You need 4 pocket pieces total for this model



Pieces

Back piece x1 (Cut out on folded fabric against the fold)

Pockets x 2 (Mirrored, ie. One right and one left)

You need 4 pocket pieces total for this model



Pieces

Sleeves x 2 (Mirrored, ie. One right and one left)

Sleeve cuffs x 2 (Cut according to the measurements specified on the pattern sheet)

Leg cuffs x 2 (Cut according to the measurements specified on the pattern sheet)

Elastic for the neckline x 1, the legs, and the sleeves x 2 (Cut according to the measurements specified on the pattern sheet), I use elastic which is 1.5cm-2cm wide



Sew the pockets

The first step is to sew the pockets for the hidden pockets in the side seams. For more details on how to sew these, see pages 25-27, a dress is shown in the example, but the way to sew them remains the same. The pockets are an optional feature, and can be excluded entirely if you prefer.

Transfer over the markings for the placing of the pockets from the pattern sheet, in the picture I've marked this with red clips. Align the top of the pocket with the markings on the pattern. Keep in mind that these markings are without seam allowance.



Sew the pockets onto the front and back pieces - Pin the pockets

Place the pocket pieces right sides together on the front piece. Sew where I've marked with clips.

For more details on how to get a nice transition between the pockets and the side seams, see pages 25-26.



Sew the pockets onto the front and back pieces - Sewn together

This is how it should look when the pocket pieces are sewn. I have even sewn a stitch according to the description on page 7.

Sew the pocket pieces onto the back pieces the same way as we did for the front piece.



Sew the sleeves onto the front piece, ie. Sew the raglan seams

Start with sewing the sleeves onto the front piece.



Sew the sleeves onto the front piece, ie. Sew the raglan seams

Place the sleeve against the front piece, right sides together, pin the raglan seam, and sew where I've marked with clips. The sleeve is higher at the back than at the front, so the part of the sleeve which is higher should be pinned against the back piece.



Sew the sleeves onto the front piece, ie. Sew the raglan seams

Place the other sleeve against the front piece, right sides together, pin the raglan seam, and sew where I've marked with clips.



Sewn together

This is how it looks when both sleeves are sewn onto the front piece.

The next step is to sew the sleeves onto the back piece



Sew the back piece onto the sleeves, ie. Sew the raglan seams

Place the back piece against the sleeves, right sides together, pin the raglan seams and sew where I've marked with clips.



Sewn together

This is how it looks when the sleeves, front piece, and back piece are sewn together with raglan seams.

The next step is to sew the side seams.



Sew the side seams - Pin together the side seams

Now we will sew the side seams. Place the jumpsuit's back piece and front piece right sides together and pin the side seams. Pin the entire way from the arm opening down to the leg ending, including around the outer edge of the pockets. For tips on how to get a nice transition between the pockets and the side seams, see pages 27. Sew where I've marked with clips.



Sewn together

This is how it looks when the jumpsuit's side seams are sewn. The next step is to sew the inner leg seam



Sew the inner leg seam

Place the jumpsuit's front and back pieces right sides together and pin the inner leg seam.

Optional; då denna söm utsätts för en hel del påfrestning så kan det vara en fördel att förstärka den med en elastisk söm (t ex elastisk räk-söm eller svag sick-sack) om man syr ihop plagget med en overlock.



Sewn together

This is how it looks when the jumpsuit's pieces are sewn together.



Sew the elastic channel

The next step is to hem the neckline and sew the elastic channel.

More details on how to do this are on pages 10-13.



Sew the elastic channel - Fold in the neckline's hem

Fold in the neckline's hem against the shirt's wrong side. Hold it in place with pins or clips. Glöm inte att lämna en öppning så att resåren kan träs in i kanalen som bildas. Jag lämnar en öppning på ca 3 cm som jag markerar för med nålar (markerad med röd ram). Sy fast fällen för att bilda en resårkanal, trä sedan in resåren och sy igen kanalen som tidigare beskrivits på sidan 10-13.



Sew the elastic channel - Sewn together

This is how it looks when the neckline's elastic channel is sewn.

The next step is to sew the sleeve and leg cuffs.



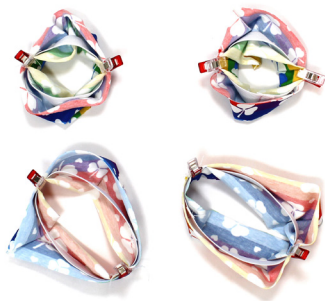
Sew together the sleeve and leg cuffs

Sewn together in the same way as described on pages 15-17



Sew together the cuffs - Sew the short sides and make the elastic into a ring

Fold the cuffs, right sides together, so that the short sides meet. Sew the cuffs where I've marked with clips. Just like the elastic in the neckline, I cut the elastic a little longer than the measurement on the pattern sheet and mark with a pen where the elastic should be sewn together (marked with red). I place the markings that I did earlier on the elastic overtop of one another and hold together the elastic with help of two clips while I sew along the marking.



Sew together the sleeve and leg cuffs - Sewn together

Now we put the elastic into the cuffs. The elastic should be in the cuff's wrong side, encased by the cuff.

Since the elastic is much shorter than the actual cuff, it is important in the following steps to not pin or sew down the elastic. The elastic should always be able to sit freely within the cuff because it should be able to bring the cuff together evenly once it's sewn onto the garment.



Sew on the cuffs - Mark the sleeve endings

Divide the cuffs into two, and mark with clips. Do the same thing with the sleeve and leg endings by putting a clip at the side seam and another one opposite the first clip.



Sew on the cuffs - Pin the cuffs

Place the cuff inside the leg opening so that the edges are right sides together against the edge on the leg opening. Pin it down by matching the markings we did earlier on the cuffs with the markings we made on the leg endings.



Sew the cuffs - Pin the cuffs

Add a few extra clips/pins to get the cuff evenly distributed.

The cuff is the same measurement as the leg's opening, while the elastic is shorter. It's important to not pin or sew the elastic, it should sit freely within the cuff.



Sew the cuffs - Pin the cuffs

Pin the arm cuffs the same way. Sew the cuff where I've marked with clips. It's important to not pin or sew the elastic, it should sit freely within the cuff.



Finished

The fabrics used for this tutorial are from Trådsnella.

The sewing machines used for this tutorial are from JUKI

Sverige.

Tutorial by: Helena Persson, Skurkan

Tutorial translated by: Jenna Iwanchuk

Hidden pockets in the side seams



Transfer over the markings for the pockets

Transfer over the markings for the correct pocket placement from the pattern sheet onto the garment's front and back piece, ie. by marking it with chalk, pin, or a little clip on the seam allowance.



Transfer over the markings for the pockets

The marking for the pocket is illustrated with a clip in the picture. Place the pocket piece's upper edge in line with the markings on the pattern. Keep in mind that these markings are without any seam allowance, which means that the pocket pouch will be placed above the marking with the amount of seam allowance which you've added.



Pin the pockets onto the front piece

Place the pocket pieces right sides together with the front piece. Sew where I've marked with clips. The pocket pieces can be sewn with your choice of stretch stitch on a household sewing machine, or with an overlock. I've chosen to sew the pockets with a straight stretch stitch on an ordinary sewing machine because I think that it's easier to get a really nice transition between the side seam and the pocket that way.



Sewn together

This is how it looks then the pocket piece is sewn.

Hidden pockets in the side seams



Sewn together

When the pocket pieces are sewn, I usually press them with an iron so that the seam allowance is placed toward the pocket.



Sew the pockets – sew the seam allowance against the pocket

Optional

To get a bit of extra stability at the pocket opening, you can sew the seam allowance toward the pocket. Use a stretch stitch if you sew this, ie. twin needle, or a narrow zigzag.



Sewn together

This is how it looks once the stitch is sewn. I used a straight stretch stitch.



Sewn together

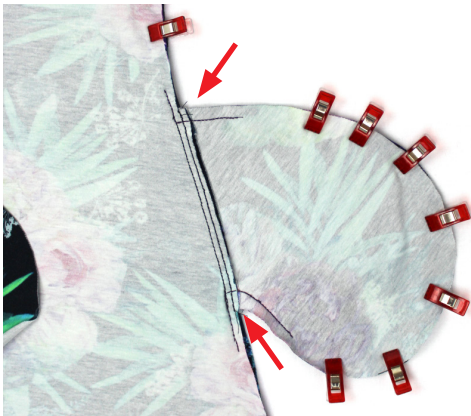
This is how the front piece looks when both pocket pieces are sewn. Sew the pocket pieces onto the back piece the same way.

Hidden pockets



Sew the side seams

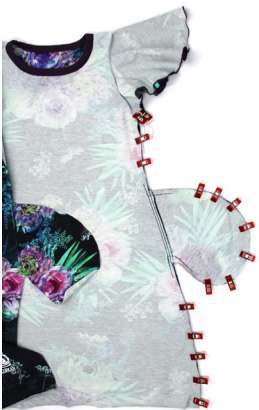
Place the front piece and the back piece onto each other right sides together. Fit the pieces together so that pockets are aligned with each other. Pin the entire side seam, including around the pocket's outer edge.



The pockets

It's easier to sew a sharp curve with a household sewing machine than with an overlock, so you can sew a few cm with a straight stretch stitch at the transition between the garment and the pocket before you sew together the entire side seam with an overlock. By the red arrows.

Alternatively, you can sew the entire side seam with a household sewing machine.



Sew the side seams

Sew together the side seams where I've marked with clips.



Sewn together

This is how it looks at the pocket when the side seam has been sewn together.

Sew together the other side seam the same way.