



Made by Runi

It's a wrap

Pockets

Ruffles that doesn't need
gathering

4 different sleeve options

4 different skirt lengths

Size 34-58



This pattern is copyrighted, with all rights reserved. You may print copies of the PDF for your own use.

You may not make duplicate copies of either the printed pattern, or the PDF file to share.

You are not allowed to sell, trade, or share this pattern in any form.

Small home based business are allowed to sell finished items made from this pattern.

Made by Runi ©2019

Before you start:

Read all instructions before starting project.

Seam allowance is NOT included, Do not add seam allowance on the fold or where you will add binding. I usually have a seam allowance of 0.6 cm since I use a serger with a seam that is 0.5cm wide.

A stretchy knitted fabric is suitable for this pattern.

Prewash all fabrics before sewing to avoid color bleeding and shrinking.

Measure the test square on the first page to make sure you printed correctly.

It should measure exactly 4x4 cm (or 2x2")

Make sure you are using the most up to date version of Adobe Reader.

You will need:

Sewing machine

Scissors

Thread

Ballpoint needle (in machine)

Wonder clips or pins

Fabric

Measuring tape

Fabric requirements:

The pattern does not include seam allowance. Fabric requirements are based on fabric with a width of 150cm.

In addition to the amount shown, you need fabric for bindings, ears/spikes, cuffs, waistband and pockets. All numbers are in cm.

Bodice/överdel

Size	Fabric length
All	40-50cm

Ruffles / Volanger

Model	Fabric length
Maxi	100cm
Short skirt	90cm
Neckline	35cm

Sleeve / Ärm

Model	Fabric length
Short	20-25cm
Half sleeve	50-55cm
Long	65-70cm

Short skirt w. Ruffles

Kort kjol med volang

Size	Fabric length
34-54	110cm
56-58	165cm

Maxi skirt w. Ruffles

Maxi kjol med volang

Size	Fabric length
34-54	185cm
56-58	295cm

Short skirt no Ruffles

Kort kjol utan volang

Size	Fabric length
34-54	130cm
56-58	185cm

Maxi skirt no Ruffles

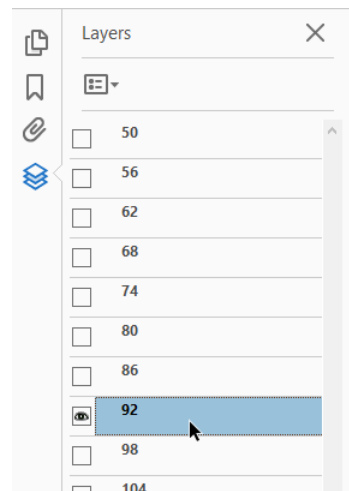
Maxi kjol utan volang

Size	Fabric length
34-54	195cm
56-58	300cm

It is possible to print only certain sizes using the “layers” function in acrobat.

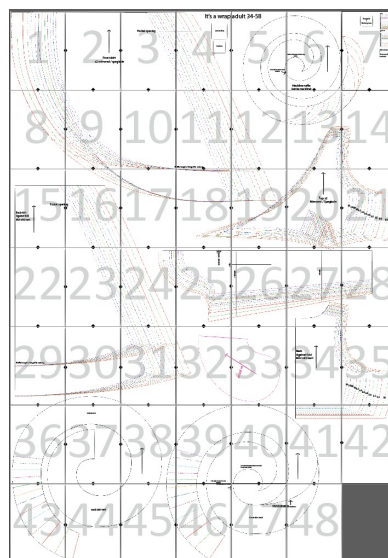
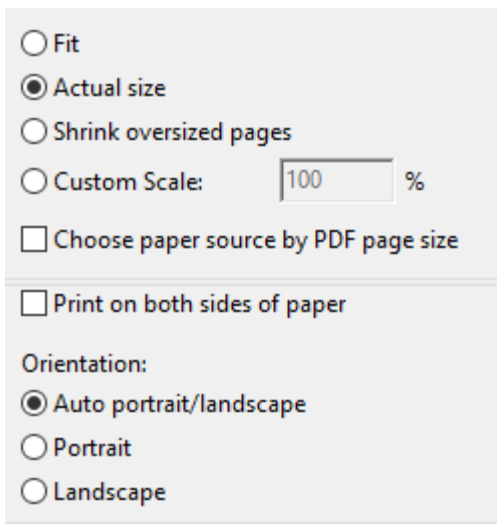
Select the “Layers” tab.

Unselect the sizes you do not want to print, leave the last layer selected.



When printing make sure your printer settings are set to “Actual size” and “Auto portrait/landscape”.

The files can be printed on Letter and A4



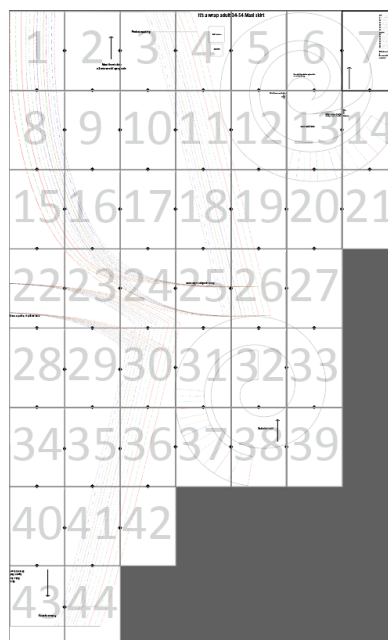
Tape the pattern together as shown to the right.

Tip: Cut of the top and left edge of each pattern piece.

Line up each line so the triangles meet and form a diamond.

Do not cut out pattern pieces before taping all of the pages together.

This pattern has two files, one with only the maxi skirt and one with the rest of the pattern.



European sizes (cm):

Storlek	34	36	38	40	42	44	46	48	50	52	54	56	58
Brystvidde	80	84	88	93	96	100	104	110	116	122	128	134	140
Midjemål	65	69	73	77	81	85	89	95	101	107	113	119	125
Stussvidde	88	92	96	100	104	108	112	117	122	127	132	137	142

US Sizes (inches):

Size	4	6	8	10	12	14	16	18	20	22	24	26	28
Bust	31	33	35	37	38	39	41	43	45	48	50	52	55
Waist	25,5	27	28,5	30	32	33,5	35	37	39,5	42	44,5	47	49
Hip	34,5	36	38	39,5	41	42,5	44	46	48	50	52	54	56



Made by Runi

More photos of finished dresses and more of my designs are posted regularly on:

Instagram: @madebyruni (please tag #madebyruni when you post photos of your creations)

Facebook: <https://www.facebook.com/madebyruni/>
<https://www.facebook.com/groups/madebyruni>

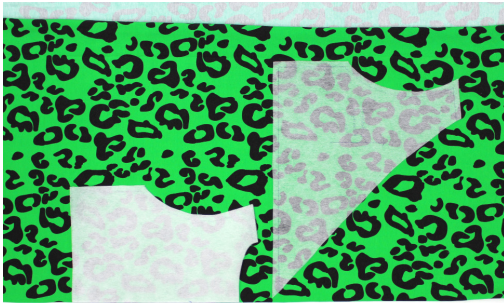
All my patterns are available for purchase at www.madebyruni.com several of them are also available as physical prints for those who prefer that.

More tutorials and options on: www.patternsbyruni.wordpress.com

Before Cutting

INFO! This tutorial shows the child version except on page 9-11 wich shows the darts.

Choose version: This dress has several options. It can be sewn with or without ruffles on the top or skirt. There are several sleeve lengths and a sleeveless option. Think about choosing the right dress length; there are different lengths on the skirt if you sew with or without ruffles. In this tutorial I show two different models that show all the steps you need to sew this dress. Please read the entire tutorial before starting, as you might choose a different combination than I have. It is important that the ruffles are cut correctly, and that both ties, the tie strips, and the button tabs are on the proper sides.



Cut out all the pieces

Pieces marked "against fold" need to be placed on the fold. This applies to the bodice back as in the first illustration. Other parts should be cut mirrored, such as the bodice front. This can be done on folded fabric but not placed on the fold; this is also in the first illustration. Seam allowance needs to be added everywhere two pieces will be sewn together.



All pieces - bodice

Here are the pieces to cut for the bodice, including the ruffle.

Bodice back x1 (cut on the fold)

Bodice front x2 (mirrored, i.e. one of each)

Flounce - neckline ruffle x1

Button tab x1

Tie and snap (push button)

Neck binding



All pieces - Skirt

Here are all the skirt parts, including the ruffle.

Back skirt at ruffle line x1 (cut on the fold)

Front skirt cut on ruffle line, x2 (mirrored, i.e. a right and a left)

Ruffle - Back skirt flounce x1

Ruffle - Front skirt flounce x2 (mirrored, i.e. a right and a left)

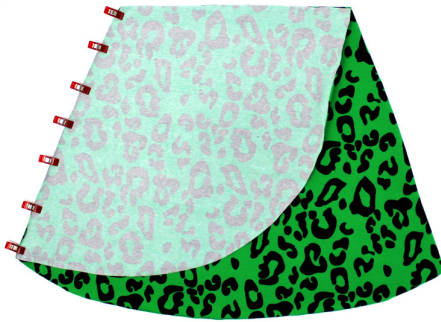
*One of the ruffles should be shorter than the other two.



Sew the Skirt Parts Together

Start by sewing the parts of the skirt together.

If you want pockets you'll need to sew them first; see pages 17-18 or 24-26.



Sew the Skirt

Place a front skirt on the back skirt, right sides together.

Sew the seam I have marked with clips.



Sew the Skirt

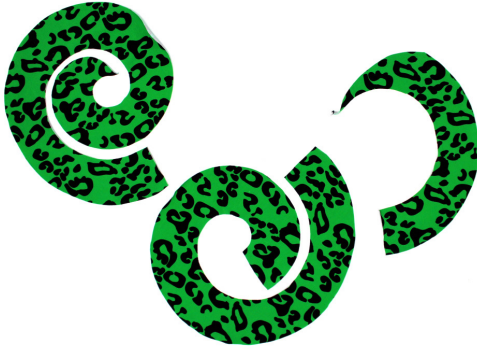
Sew the other front skirt to the back skirt in the same way.



Sewn Together

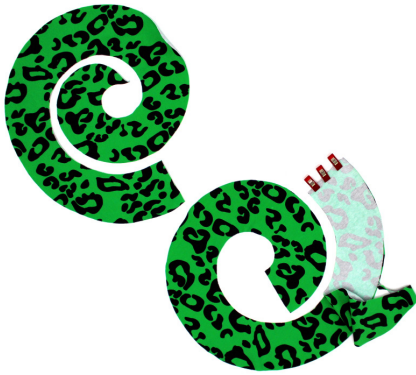
This is how it looks with the skirt parts assembled.

The next step is to sew the ruffles to the skirt.



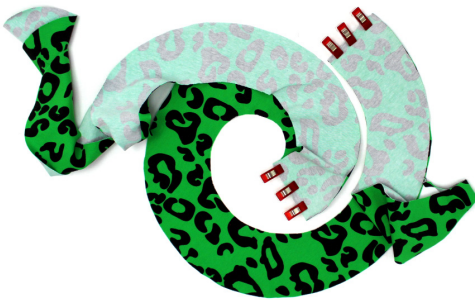
Sew the Ruffles

Now the three ruffles should be sewn together.



Sew the Ruffles

Pin/clip the straight edges of the front ruffles to the straight edges of back ruffle.



Sew the Ruffles

Sew the ruffles where I have marked with clips.



Sewn Together

This is what it should look like after being sewn together.

The next step is to sew it onto the skirt.



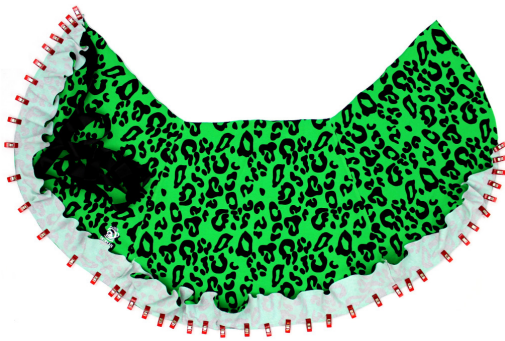
Sew on a Tie

One of the two ties is sewn to the skirt. Pin it on as shown. I have chosen silk ribbons, but you can make ribbons with fabric, lace, etc.



Sew on a Tie

The tie should be placed high on the skirt. I've just left the seam allowance above it. You can baste the ribbon in the seam allowance or let it get sewn while sewing on the ruffle.



Sew on the Ruffle

Pin the ruffle on the bottom of the skirt. The ruffle ends where the other side will cover it when worn. The tie ends up between the skirt and the ruffle.

Sew where I have marked with clips.

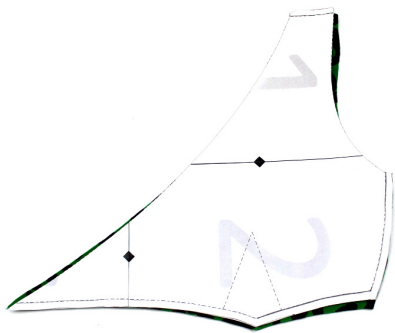


Sewn Together

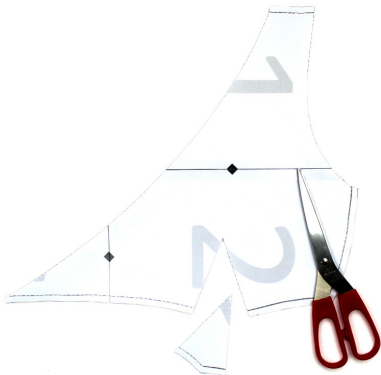
Here is the skirt all finished with the ruffle and tie. Set it aside for now. Next we'll prepare the bodice.



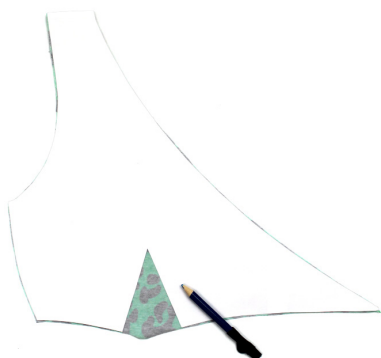
Cut the front piece
Cut two front pieces mirrored.



Dart
We need to transfer the marking for the dart onto the fabric. There are different ways to do this but in this tutorial I'll show you how to do it with a fabric marker.



Prepare the pattern
I usually just cut the dart out of the pattern piece to make it easy to mark on the fabric.



Draw the dart
Draw the dart with a pen made for fabric on the wrong side of the fabric. Make sure it's a marker that doesn't show through the fabric.



It should look like this now.



Fold the fabric

Fold the fabric rights sides together. Make sure the lines on the dart are on top of each other.



Close up



Sew the dart

Start at the bottom and use a straight stitch. When you get close to the top make sure to make it a smooth transition at the end instead of a hard edge. Sew the entire way out from the fabric and leave a little thread to make a knot instead of reversing to attach the thread.



It should look like this now



Iron it to the side.



Front

Do the same on the other front piece then you're finished.



Sew the Bodice

Now we'll sew the bodice together. This example dress will be sleeveless.



Sew the Shoulder Seams

Lay the back bodice down, right side up. Place the two front bodices on top of the back, right sides together, lining up the shoulders. Sew the shoulder seams where I have marked with clips.



Sewn Together

This is what the bodice looks like with the shoulder seams sewn.



Bind the Armscyes

The next step is to bind the armscyes. If you want to sew sleeves on this model, then follow the instructions on pages 23-24. If you sew a sleeve instead of binding, you'll need to add seam allowance to the armscye while cutting out the pieces. If you're binding the sleeveless armscye there are instructions on pages 30-31.



Binding sewn

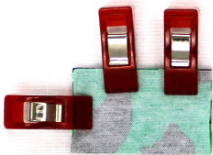
This is what the bodice looks like with the binding on the armholes.

Before the side seams are sewn we need to assemble the button tab.



Sew the Button Tab

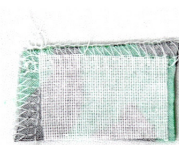
Fold the button strip in half, right sides together.



Sew the Button Tab

Pin/clip the long side and one short side.

Sew where I have marked with clips.



Sew the Button Tab

This is how the button tab looks when it's sewn. If you wish, you can strengthen the button tab by applying a small piece of interfacing, such as Vlieseline H200 or a woven interfacing.



Button Tab

Turn the button tab right side out. Now it's ready to be sewn to the inside of your bodice.



Sew on a Tie

The second tie for the dress should be sewn to the upper side seam. Just like the other tie, place it as close to the seam between the top and skirt as possible. I just left room for the seam allowance. Be sure to place the tie on the opposite side of the dress than the first tie. This tie should be against the top of the right. Pin at the side seam.



Sew on a Tie

Pin the bodice back and bodice front side seam with the tie between them.



Sew on the Button Tab

The button tab should also be sewn into the side seam, but it should be on the inside of the dress. Therefore, pin the button tab on the inside of the back bodice. The button tab should also be sewn as close as possible to the seam between the top and the skirt. I just left room for the seam allowance.



Pin the Side Seam

Pin the bodice back and bodice front at the other side seam, with the button tab lying on the back bodice.

Sew both side seams where I have marked with clips.



Sewn Together

This is what the bodice looks like now that the side seams are sewn. The tie should be sewn firmly and be on the outside. The button tab must be sewn into the other side seam and be on the inside.

The next step is to sew the bodice to the skirt.



Sew the Bodice to the Skirt

Pin the bottom edge of the bodice to the top edge of the skirt, right sides together. Sew where I have marked with clips.



Sewn

This is what it looks like with the bodice sewn to the skirt.

The next step is to hem the ruffles.

It's a wrap With ruffles



Ruffle hems

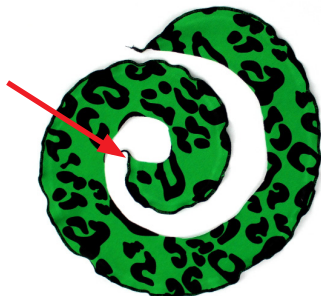
If you use a fabric like viscose knit or a double brushed poly, you can leave the outer edge raw; no hem is needed. But if you use a cotton spandex jersey or a fabric that rolls at the edges it has to be finished to keep it from being rolled up when washed and worn. A rolled hem is perfect for this! I sew a rolled hem along the entire skirt/ruffle edge, starting with one arrow in the picture and ending with the other arrow.

Follow the rolled hem instructions in your sewing machine's manual; Every machine and overlocker can have different settings and adjustments.



Sew Neckline Ruffle

On this dress I have chosen to sew ruffles on the bodice, the neckline ruffle. I will also sew a rolled hem on the outer edge of the neckline ruffle.



Sew rolls

This is what the ruffle looks like when I have sewn a rolled hem on the outer edge. The inner parts of the ruffle (arrow) will be attached to the side of the skirt to which the tie strap is attached (arrow in the next picture).



Sew the Ruffle to the Bodice

Pin the raw, inner edge of the ruffle to the neckline, wrong side of the ruffle to the right side of the bodice.

It's a wrap With ruffles



Sew the Tie onto the Bodice

The waist should be a little shorter on the part of the top that will be underneath when the dress is wrapped/worn. Sew the ruffle on the bodice where I have marked with clips. Bind the neck opening, leaving a few cm extra binding band at both ends of the neckline.

If you are binding manually there are instructions for how to do this on pages 30-31.



Bound Neckline

This is what it looks like when the binding is on the neckline.

The next step is to attach the snap.



Attach Snap

Attach a snap to the dress. Install the male side of the snap to the button tab. Install the female side of the snap onto the binding as shown, just above the skirt/bodice seam.



Fold over the Binding

To get a nice finish fold the extra binding to the inside of the bodice. Sew it with a few stitches through the binding where I have marked with a clip. Do the same on both sides. Cut away an excess.

It's a wrap With ruffles



Finished

The fabric used for this dress is from Nygård Textiles.

The sewing machines used for this tutorial are from JUKI Sweden.



Finished

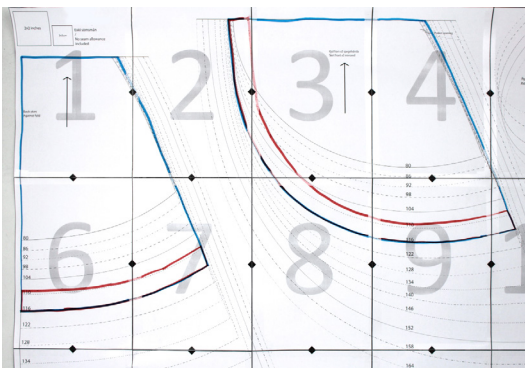
The fabric used for this dress is from Nygård Textiles.

The sewing machines used for this tutorial are from JUKI Sweden.

Before You Cut

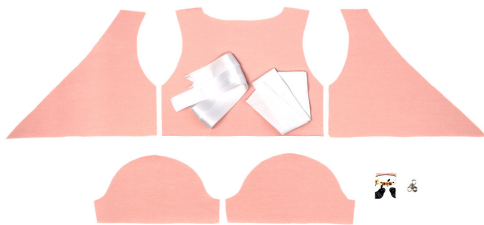
On this dress I have chosen not to sew any ruffles. I finish the skirt by sewing a facing instead. There is no pattern piece for the facings, but you can easily draw it yourself using the pattern pieces for the front and back skirts. You can choose to fold the skirt instead or sew lace there if you prefer.

Remember to add seam allowance everywhere two pieces will be sewn together.



Create pattern piece for facings

On this version I finish the hem with a facing. You can easily draw a pattern piece for the facing by following the shape of the bottom of the skirt pieces (overlapping red and blue lines in the picture), as well as drawing a line 3cm above the lower edge (red line). This gives a 3cm wide facing strip for each skirt piece, i.e. the area between the red line and lower blue line (marked with green lines).



All bodice parts

Here are all the bodice parts.

Back bodice x1 (cut on the fold)

Front bodice x2 (mirrored, i.e. a left and a right)

Sleeve x2

Button tab x1

Snap x1 set (push button)

Binding for sleeves and neck openings



All skirt parts

Here are all the skirt parts when sewn with a facing.

Back skirt x1 (cut on the fold)

Front skirt, x2 (mirrored, i.e. a left and a right)

Pockets x4 (mirrored, i.e. two left and two right)

Facing for the back skirt x1 (cut on the fold)

Facing for the front skirt x 2 (mirrored, i.e. one left and one right)



Sew the Back Pockets

Lay the straight edges of the pocket pieces against the side of the back skirt, right sides together, matching the top of the pocket to the notch on the skirt pattern piece. For clearer instructions for sewing the pockets see pages 24-26.



Sew the Front Pockets

Lay the straight edges of the pocket pieces against the sides of the front skirt, right sides together, matching the top of the pocket to the notch on the pattern piece. For clearer pocket instructions see pages 27-29.



Sew the Skirt Together

Place a skirt front on top of the back, right sides together. Pin the side seam. Sew where I have marked with clips. For clearer instructions on to sew around the pockets see pages 27-29.



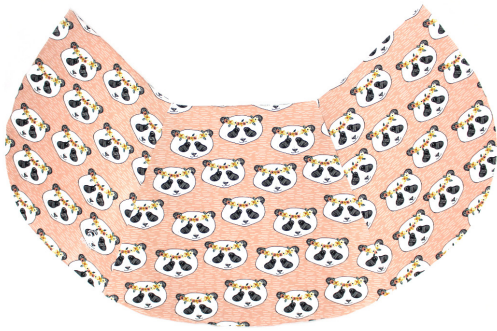
Sewn.

This is what it looks like when one front skirt is sewn to the back skirt.



Sew the Skirt Pieces

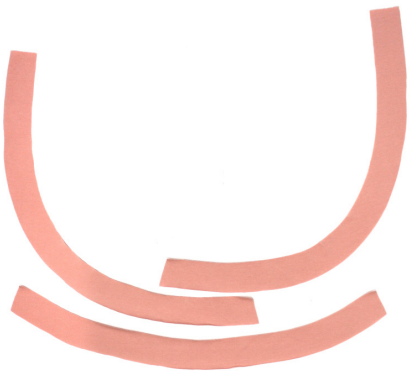
Sew the other front skirt piece to the back skirt in the same way.



Sewn

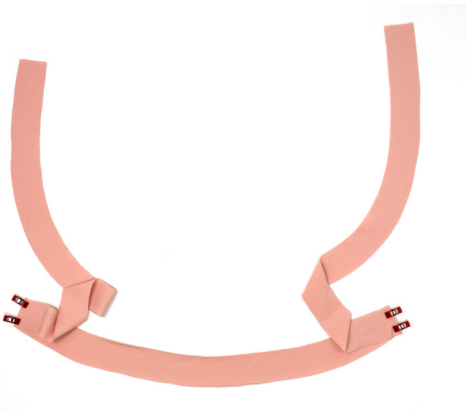
This is what it looks like when the skirt fronts are sewn to the skirt back.

The next step is to sew the skirt facings together in the same way.



Sew the Facings

Now the three skirt facings will be sewn together.



Sew the Facings Together

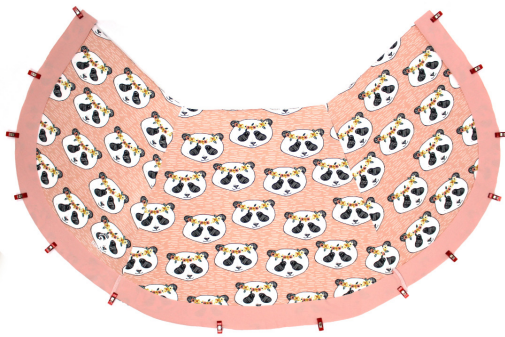
Pin the front facings to the back facing and sew together where I have marked with clips.

The next step is to sew the facing to the skirt; do not forget to attach the tie before the facing.



Sew on a Tie

Sew a tie between the facing and the skirt in the same way described on page 8.



Sew the Facing to the Dress

Place the facing on the skirt, right sides together, and sew where I have marked with clips.



Sew the Facing to the Dress

Fold over the facing so that it's inside the skirt, i.e. the facing and skirt are now wrong sides together. Press with an iron to get a really smooth and sharp edge along the bottom of the skirt.



Sew the Facing to the Dress

Topstitch the facing by sewing from the right side of the skirt. I did the facing 3cm wide and sewed 3cm from the bottom edge of the skirt. Topstitch with a decorative stitch, coverstitch, or a small zigzag.

It's a wrap with facing



Sewn

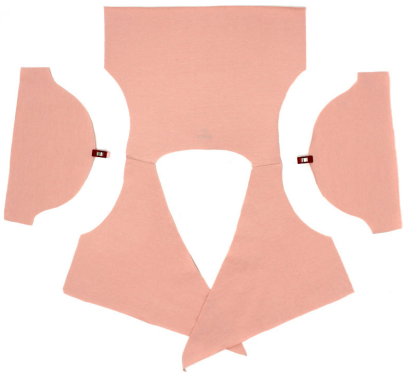
This is how the facing looks up close when it's sewn and topstitched. Set the skirt aside for now.

The next step is to sew the bodice.



Sew Shoulder Seams

Sew the shoulder seams the same way as described on page 9.



Sew Sleeves to Bodice

Mark the center of the curved side of the sleeves; this will be matched to the shoulder seam.



Sew Sleeves to Bodice

Pin the sleeve to the bodice, right sides together, and sew the sleeve to the bodice where I have marked with clips.



Sew Sleeves to Bodice
Sew the other sleeve in the same way.



Sewn
This is what it looks like with both sleeves sewn to the bodice.



Bind Sleeves
Bind the sleeves. There are instructions for this on pages 30-31.



Sewn
This is what the bodice looks like when the sleeves are bound. The next step is to sew the side seams together, while at the same time sewing the other tie and the button tab. Sew this per the instructions on pages 13-14.

It's a wrap with facing

Sewn



This is what the bodice looks like now that the side seams are sewn. The tie should be sewn into the side seam and be on the outside. The button tab must be sewn into the other side seam and be inside the bodice.

The next step is to sew the bodice to the skirt.



Sew Bodice to Skirt

Pin the bottom edge of the bodice to the top edge of the skirt, right sides together, and sew where I have marked with clips.



Sewn

This is what it looks like with the bodice sewn to the skirt.

The next step is to bind the neckline, leaving a few cm extra binding band at each end of the neckline. There are instructions for binding on pages 30-31.



Bound neckline

This is what it looks like with binding on the neckline.

The next step is to attach the snap.

It's a wrap with facing



Attach Snap and Finish Binding

Attach a snap to the dress. Put the male snap on the button tab. Put the female snap onto the binding just above the skirt/bodice seam.

To get a nice finish fold the extra binding to the inside and sew a few stitches through the binding where I have marked with a clip. Do the same on both sides. Cut away any excess binding.



Finished

The fabric used for this dress comes from Elvelyckan Design.

The sewing machines used for this tutorial are from JUKI Sverige.



Pocket Markings

Transfer the markings for the pocket placement from the pattern piece to the front and back of the skirt or dress, for example with chalk, a pin, or a small cut in the seam allowance.



Match Pocket Markings

The markings for the pocket are illustrated with a clip in the picture. Align the top of the pockets with the markings. Keep in mind these markings are without a seam allowance, which means that the pocket will be placed above the markings by the amount of seam allowance you added when cutting pieces.



Pin Pocket

Place the pockets to the front piece, right sides together, and sew where I have marked with clips.

The pockets can be sewn with a stretch stitch on a regular sewing machine or with an overlocker. I have chosen to sew the pocket with a straight stretch stitch on a regular sewing machine, as I find it easier to get a really nice seam that way.



Sewn

This is what it looks like with the pocket sewn to the front.

Pockets in the side seams



Sewn

When the pockets are attached, I usually press them with the iron so the seam allowance is pressed toward the pockets.



Hidden Pockets in Side Seams

Topstitch along the seam you've just made, on the pocket, with the seam allowance pressed toward the pocket.

Use a stretch stitch, twin needle, or a small zigzag.



Sewn

This is what it looks like when the pocket is topstitched with a straight stretch stitch.



Sewn

This is what the front piece looks like when both pockets have been sewn. Sew the other pair of pockets to the back dress/skirt in the same way.

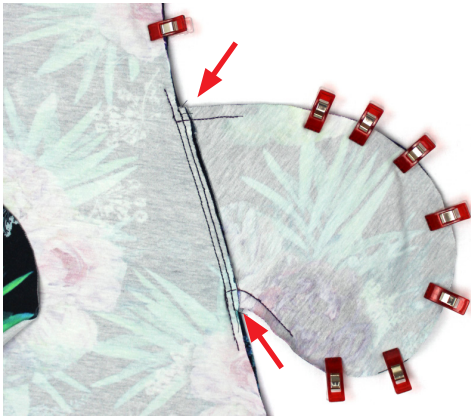
Pockets in the side seams



Sew Side Seams

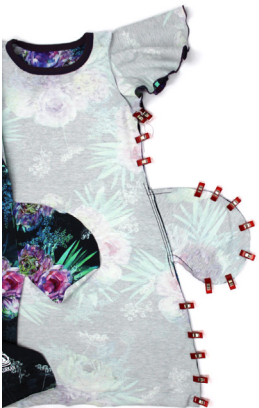
Lay the front skirt/dress on top of the back, right sides together. Fit them together so the pockets are against each other.

Pin all the way from the sleeve opening down to the bottom of the dress/skirt, including around outer edge of the pocket.



Pockets

It is easier to sew a sharp curve with a regular sewing machine than with an overlocker. You can sew a few cm with a straight stretch stitch in the join between the skirt and the pocket before sewing the entire side seam with an overlocker (red arrows). Alternatively you can sew the entire side seam with a regular sewing machine.



Sew Side Seams

Sew the side seams together where I have marked with clips.



Sewn

This is what it looks like at the pocket when the side seam is sewn together.

Sew the other side together in the same way.



Classic edge binding.

Start with measuring the pocket opening, hem or sleeve depending on what you plan to attach binding to.



Do some math.

Mine measures 14cm (5.5")

Take your measurement and multiply with 0.8 (or 0.75 if it is a very stretchy fabric)

For me I get $14 \times 0.75 = 10.5\text{cm}$ (size 92/2t)

So I cut 2 pieces that are 10.5×4 (length*height) since I am binding pocket openings.



Pin and sew.

With right sides together, pin the edges together first then stretch the band to fit and pin where needed. Sew together.



Fold over.

This will create a rather thin band, I will show a different way I do when I want a wider band on the next page.

Pin in place and sew using a stretch stitch. I like to use a ordinary small zig zag.



Clean up.

Cut off the excess fabric (or next time remember to cut about 3 cm instead for this one).

Check out your awesome handy work and move on to sewing the pockets or side seams.



For a wider band.

Before I fold over I just use a straight stitch at the width I want the finished band to be.



Fold over.

The result is this after folding over. Sew using a stretch or decorative stitch as before.



Finished!