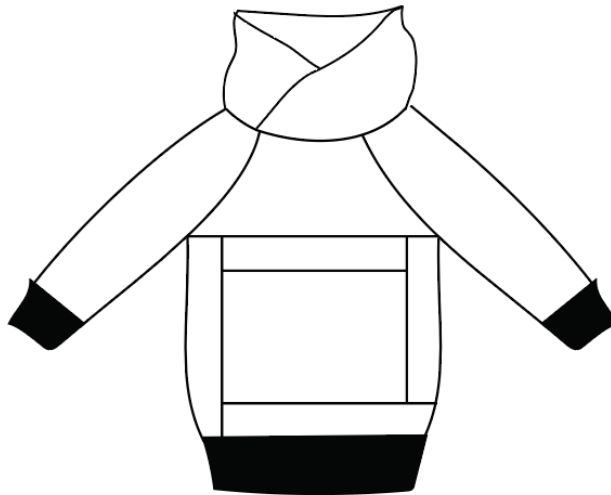


Made by Runi



Such a square

Cross over collar
Colour block
Size 80-164



This pattern is copyrighted, with all rights reserved. You may print copies of the PDF for your own use. You may not make duplicate copies of either the printed pattern, or the PDF file to share. You are not allowed to sell, trade, or share this pattern in any form. Small home based business are allowed to sell finished items made from this pattern.

Made by Runi ©2019

Before you start:

Read all instructions before starting project.

Seam allowance is NOT included, Do not add seam allowance on the fold or where you will add binding. I usually have a seam allowance of 0.6 cm since I use a serger with a seam that is 0.5cm wide.

A stretchy knitted fabric like CL is suitable for this pattern.

Prewash all fabrics before sewing to avoid color bleeding and shrinking.

Measure the test square on the first page to make sure you printed correctly.

It should measure exactly 4x4 cm (or 2x2")

Make sure you are using the most up to date version of Adobe Reader.

You will need:

Sewing machine

Scissors

Thread

Ballpoint needle (in machine)

Wonder clips or pins

Fabric

Measuring tape

Fabric requirements:

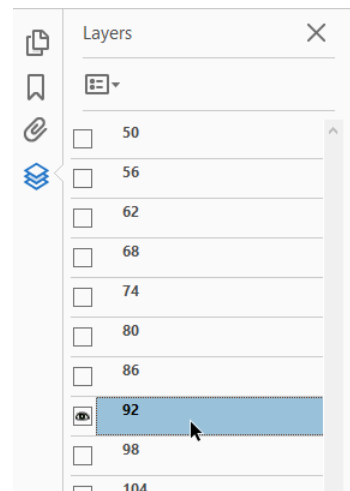
The pattern does not include seam allowance. Fabric requirements are based on fabric with a width of 150cm. In addition to the amount shown, you need fabric for lining of the collar. All numbers are in cm.

All sizes: Piece	Fabric
Bodice / Kropp	75cm
Sleeve / Ärm	70-75cm
Collar / Krage	25cm

It is possible to print only certain sizes using the “layers” function in acrobat.

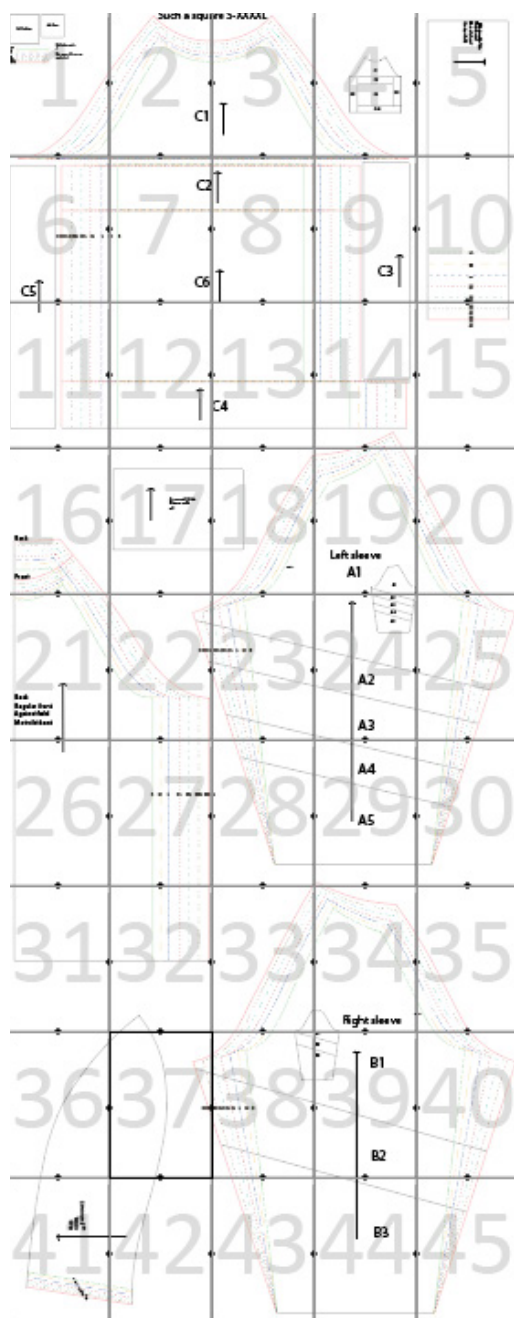
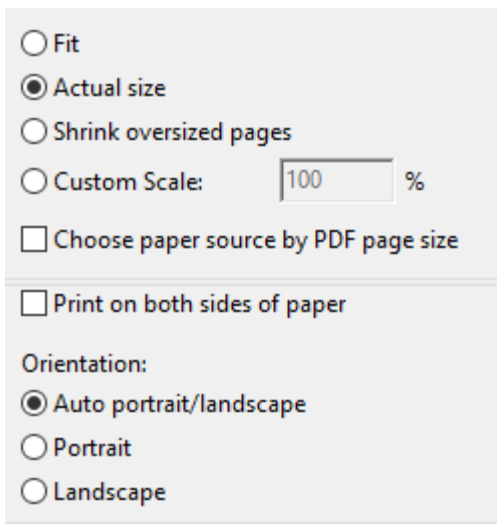
Select the “Layers” tab.

Unselect the sizes you do not want to print, leave the last layer selected.



When printing make sure your printer settings are set to “Actual size” and “Auto portrait/landscape”.

The files can be printed on Letter and A4



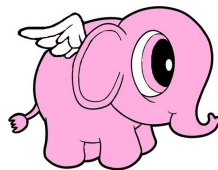
Tape the pattern together as shown to the right.

Tip: Cut of the top and left edge of each pattern piece.

Line up each line so the triangles meet and form a diamond.

Do not cut out pattern pieces before taping all of the pages together.

Size (cm)	S	M	L	XL	2XL	3XL	4XL
Chest	92	100	108	116	124	132	140
Waist	80	90	100	110	120	130	140



Made by Runi

More photos of finished dresses and more of my designs are posted regularly on:

Instagram: @madebyruni (please tag #madebyruni when you post photos of your creations)

Facebook: <https://www.facebook.com/madebyruni/>
<https://www.facebook.com/groups/madebyruni>

All my patterns are available for purchase at www.madebyruni.com several of them are also available as physical prints for those who prefer that.

More tutorials and options on: www.patternsbyruni.wordpress.com

Before Cutting

This shirt has many colorblocked pieces. You can choose to sew them all or only some of them, or skip the colorblocking altogether. In this tutorial I will show you how to sew all the colorblocking options. When cutting the fabrics it's important to have the grain lined up correctly on each piece and add seam allowance everywhere. When sewing all the parts together it's important to use the right amount of seam allowance. That is you sew with exactly the seam allowance you added while cutting, not more or less. Since there are so many pieces in this pattern, being off a millimeter will make a big difference in your end result.



Cut Pieces

Most pieces of this garment are cut on a single layer of fabric. The one exception is the back, which is cut on the fold (pictured). The parts marked against fold should be laid on the fold of double layer fabric when cut. Seam allowance should be added everywhere two pieces will be sewn together.

Piece

- Back x1 (cut on the fold)
- Collar x4 (mirrored, i.e. two right and two left)
- Waistband x1 (cut according to chart on the pattern sheet)

Pieces

- Front
- C1 - Upper block x1
- C6 - Center block x1
- C2-C5 Strips x1 each block (remember grain!)



Pieces

Left sleeve, blocks A1-A5, x1 each

Right sleeve, blocks B1-B3, x1 each

Sleeve cuff x2 (according to chart on pattern sheet)



Sew Front

I start by sewing together the five blocks of the front piece. They're all labeled on the sketch that is on the pattern sheet and in this image, so I will use those names for them for this tutorial. The lower part of the front will be sewn as a quilt box.



Sew Front Quilt Box

Place the bottom edge of C2 along the top edge of C6, right sides together, and sew where I have marked with clips.



Sew Front Quilt Box

Optional, but recommended for nice even seams:

When you've sewn the parts together, press the seam allowance toward the C2 block. When pressing with an iron be careful not to stretch the fabric to avoid having diagonal seams. I will do this throughout every block seam and the different pattern pieces.



Sew Front Quilt Box

Optional: To get nice, flat seams I topstitch on the seam allowance by sewing a stretch stitch 4-5mm from the seam between blocks. I used a straight stretch stitch, but it's just as well to use a twin needle, cover-stitch, or narrow zigzag. I sew through the block and the seam allowance pressed against its back. I will do this consistently on all seams between blocks.



Sew Front Quilt Box

This is what it looks like after I've topstitched the first block seam.



Sew Front Quilt Box

This is what it looks like when C2 is attached to the upper edge of C6.



Sew Front Quilt Box

I'll continue to sew the next block, placing C3 along the edge of C6 + C2, right sides together. Pin the pieces together and sew where I have marked with clips.



Sew Front Quilt Box

This is what it looks like when C3 is sewn to the left edge of C6 + C2. I've pressed the seam allowance toward C3 and topstitched the seam allowance in place.



Sew Front Quilt Box

The next block to be sewn is C4. Place C4 along the lower edge of C6 + C3, right sides together. Pin the pieces together and sew where I have marked with clips.



Sew Front Quilt Box

This is what it looks like when C4 is attached to the lower edge of C6 + C3. I have pressed the seam allowance toward C4 and topstitched the seam allowance in place.



Sew Front Quilt Box

The last block to be sewn to the lower part of the front is C5. Place C5 along the right edge of C6 + C2 + C4, right sides together. Pin the pieces together and sew where I have marked with clips.



Sew Front Quilt Box

This is what it looks like when C5 is also sewn. I've pressed the seam allowance toward C4 and topstitched the seam allowance in place. Now the lower part of the front piece, the quilt box, is sewn. The next step is to sew C1 and then the front will be finished.



Sew Front

C1 is not as wide as the finished quilt box. To get it right I mark the center of the quilt box and the center of C1 (latter marked on pattern sheet) with clips.



Sew Front

Starting at the center markings, pin C1 to the quilt box, right sides together. Now they'll be sewn together. It's important to only sew where the C1 block is (red line). The longer parts of the quilt box is part of the seam allowance that will be sewn to the sleeves and it must not be cut away, if for example, you sew with an overlocker (green lines).



Sewn

This is what the front piece looks like when all the parts are sewn together. I have pressed the seam allowance toward C1 and topstitched the seam allowance in place. Set the front aside for the moment while we assemble the sleeves.



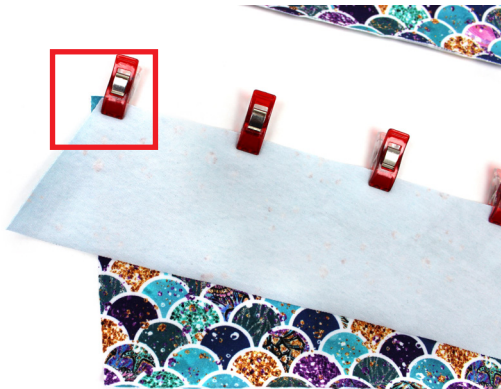
Sew Sleeves

I have chosen to sew the sleeves with all the colorblocking options. You can of course choose to exclude some or all of the colorblocking. I'm starting with the left sleeve.



Sew Sleeves

It doesn't matter which order you sew the blocks together, as long as they end up in the right order. I started at the bottom. Place A4 on A5, right sides together, pin and sew where I have marked with clips.



Sew Sleeves - Diagonally Cut Pieces

When you need to sew diagonally cut pieces, you have to place them so part of the seam allowance hangs off the end by itself (marked in red). This is part of the seam allowance.



Sew Sleeves

You'll get the same little part on both ends of the seam. After I've pinned them together I usually open the pieces to make sure they're together correctly before I sew them. You want the blocks to form even sides along the sleeve. When you're satisfied with how they're pinned, sew them together where I have marked with clips.



Sew Sleeves

Now the first two parts of the sleeve are sewn. I've pressed the seam allowance towards A5 and topstitched the seam allowance in place.



Sew Sleeves

Place A3 on A4, right sides together. Pin them together and sew where I have marked with clips. Just as before, think about the placement of the pieces so the blocks form a smooth line on the edges of the sleeve.



Sew Sleeves

Now the A5-A3 are sewn together. I've pressed the seam allowance toward A3 and topstitched the seam allowance in place.



Sew Sleeves

Continue to sew the sleeve together by placing A2 on A3, right sides together. Pin them together and sew where I have marked with clips.



Sew Sleeves

Now A2 is sewn. I've pressed the seam allowance toward A3 and topstitched the seam allowance in place. Which way to press the seam allowance is personal preference here. I usually press them toward the bottom of the sleeves, but this time I varied to avoid changing the color of the thread so often.



Sew Sleeves

Finish the left sleeve by placing A1 on A2, right sides together. Pin them together and sew where I have marked with clips.



Sew Sleeves

Now the left sleeve is sewn. I pressed the seam allowance and topstitched the seam allowance in place. Next we'll sew the right sleeve.



Sew Sleeves

As before, I pinned the blocks right sides together, carefully lining up the edges. Pin them together correctly and sew them together. Finish by pressing and topstitching the seam allowance.



Sewn

This is what the sleeves look like when they're all sewn together.



Sew Sleeves to Front

The next step is to sew the sleeves to the front, raglan style.



Sew Sleeves to Front

Place a sleeve against the front, right sides together. Pin the raglan shoulder seam together and sew where I have marked with clips.

The sleeve is higher at the back shoulder than the front, so the shoulder that is shortest should be sewn to the front.



Sew Sleeves to Front

This is what it looks like with one sleeve sewn to the front.



Sew Sleeves to Front

Place the other sleeve on the front, right sides together. Pin the raglan shoulder seam and sew where I have marked with clips.



Sewn

This is what it looks like when both sleeves are sewn to the front.



Sew Sleeves to Back

Place the back onto one of the sleeves. Pin the raglan shoulder seam together and sew where I have marked with clips.



Sewn

This is what it looks like with the back sewn to one of the sleeves.



Sew Sleeves to Back

Place the back onto the other sleeve, right sides together. Pin the raglan shoulder seam together and sew where I have marked with clips.



Sewn

This is what it looks like when the sleeves, front, and back are sewn.

The next step is to sew the side seams.



Sew Side Seams

Place the front and back right sides together. Pin all the way from the top of the sleeves down to the bottom of the sweater. Sew the side seams where I have marked with clips.



Sewn

This is how the sweater looks when the side seams are sewn.

Set the sweater aside while we prepare the collar.



Sew Collar

Now the collar will be sewn together. I have chosen to use different fabrics on the inside and outside, but you can choose your combination.



Sew Collar

Place a left and right collar, right sides together. Pin and sew where I have marked with clips.



Sew Collar

Now the outer and inner collar are assembled. The next step is to sew these together along the top edge.



Sew Collar

Place the two collar pieces right sides together. To get a nice collar make sure the center seam on both collar pieces meets. Pin the parts together and sew where I have marked with clips.



Sew Collar

Turn the collar right sides out. Press the edges with an iron to get nice, crisp edges. If you want you can topstitch along the sewn edge, however, be sure to sew at least a centimeter away from the sewn edge so you don't get wavy edges; do not sew on the seam allowance of the collar.



Sew Collar to Shirt

Now the collar will be sewn to the sweater. Mark the middle of the back neckline and the center of the collar (center seam) with clips.



Sew Collar to Shirt

Place the collar inside the neckline so it ends right sides together. The part of the collar you want outward should be touching the right side of the sweater. First, pin the middle of the collar to the middle of the back neckline, where we made the markings in the last step.



Sew Collar to Shirt

Pin the collar to the neckline, starting from the center and pinning half the collar first. This is a wrap collar so the fronts of the collar will overlap. When you pin this step it's important that you do not stretch the neckline of the shirt.



Sew Collar to Shirt

Starting at the middle of the back, start pinning the other half of the collar. Sew the collar where I have marked with clips. Be sure to include all the layers at all times while sewing.



Sewn

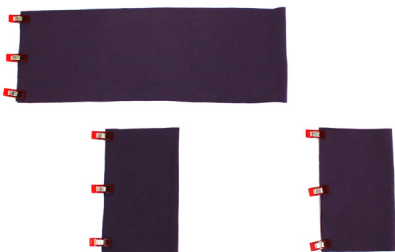
This is how the collar looks when it's sewn to the shirt. If you want you can press the seam allowance toward the shirt and topstitch it. This topstitching will add some extra stability.

Now it's just the bands/cuffs that are left.



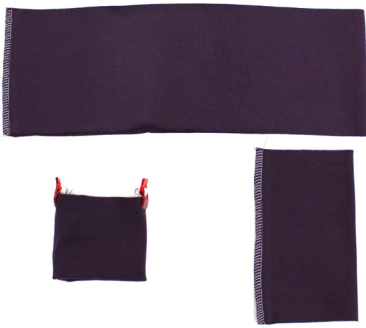
Sew Cuffs

This shirt needs three cuffs, one for each sleeve and one for the waistband.



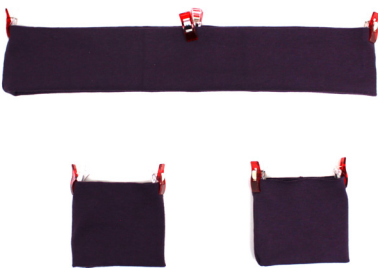
Sew Cuffs

Fold the cuffs in half, right sides together, so the short sides meet. Pin and sew the cuffs where I have marked with clips.



Fold Cuffs

Now the cuffs should be folded so the seams we just sewed end up on the inside of a double folded cuff. Fold the cuffs so the raw edges meet. The band must be folded so the seam lies against the inside of the finished cuff. The end result is a tubular cuff, double layer, with raw edges meeting straight out.



Mark Midpoints

In order to more easily distribute the waistband when it's sewn, I mark the band in even quarters with clips, and half points for the arm cuffs.

Now the cuffs will be sewn to the sweater.



Waistband

The waistband was divided into four parts and marked with clips. Do the same for the bottom of the sweater by inserting a clip into each side seam, in the middle of the front, and in the middle of the back. Mark the sleeves halfway points too.



Waistband

This is a close up of the waistband and bottom of the sweater.



Sew Waistband

Place the Waistband inside the sweater, right sides together, so all the raw edges are lined up. Pin it by matching the markings we made in earlier steps with those markings on the sweater.



Sew Waistband

Use extra pins/clips to evenly distribute the waistband. Sew on the waistband. When sewing, gently stretch the waistband to match the shirt but DON'T let the shirt stretch.



Sew Arm Cuffs

Sew the arm cuffs the same way as the waistband.



Finished

Fabric used for this sweater came from mk*designs.
The sewing machines used for this tutorial are from JUKI Sweden.