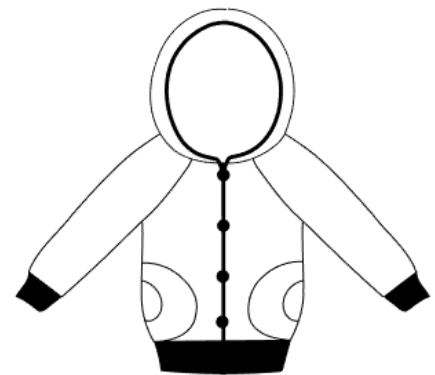
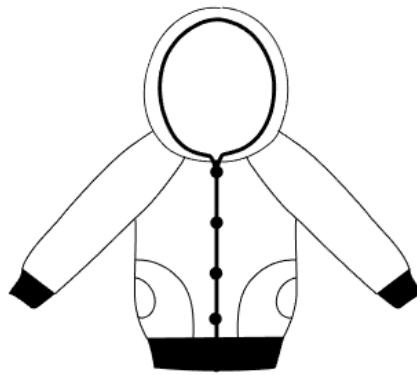
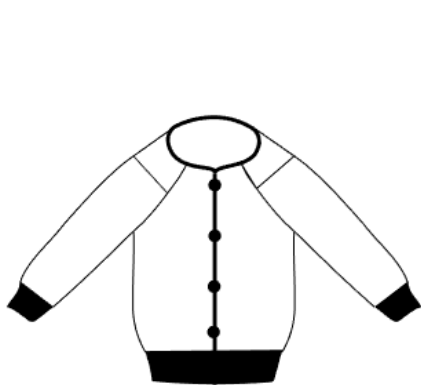


Made by Runi

# Cloudy Day Hoodie

With or with out Hood  
Buttons or zipper closure  
EU sizes: S-XXXXL



This pattern is copyrighted, with all rights reserved. You may print copies of the PDF for your own use. You may not make duplicate copies of either the printed pattern, or the PDF file to share. You are not allowed to sell, trade, or share this pattern in any form. Small home based business are allowed to sell finished items made from this pattern.

Made by Runi ©2017

**Before you start:**

Read all instructions before starting project.

Seam allowance is NOT included, add that were two pieces are sewn together.

Do not add allowance where you're going to add binding.

I usually have a seam allowance of 0.6 cm since I use a serger with a seam that is 0.5cm wide.

A stretchy knit or french terry is suitable for this pattern.

Prewash all fabrics before sewing to avoid color bleeding and shrinking.

Measure the test square on the first page to make sure you printed correctly.

It should measure exactly 4x4 cm (or 2x2")

**Make sure you are using the most up to date version of Adobe Reader.**

**You will need:**

Sewing machine

Scissors

Thread

Ballpoint needle (in machine)

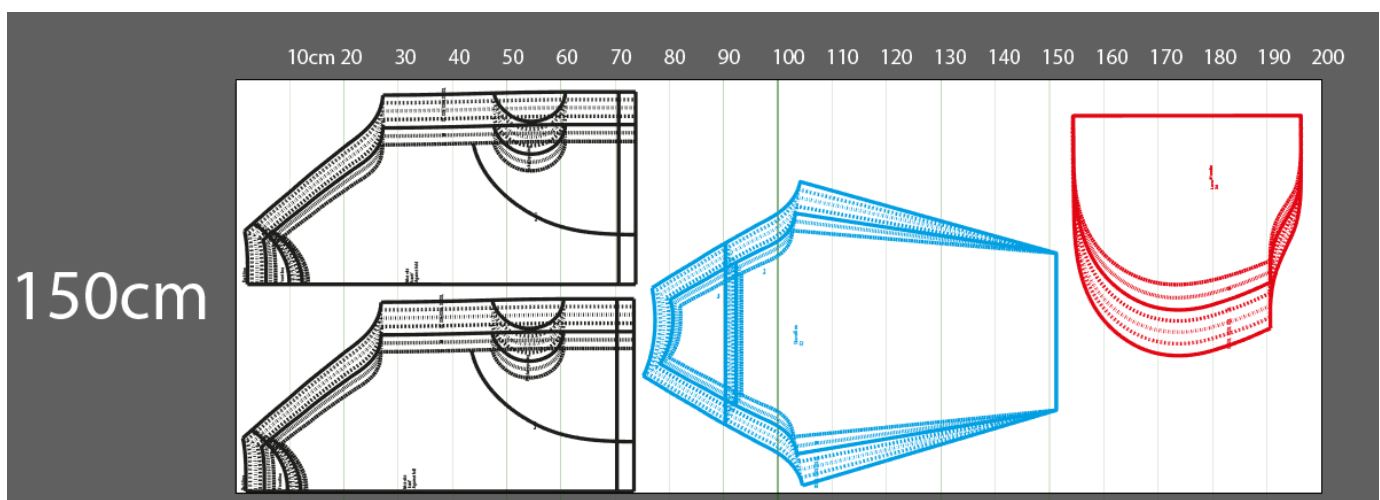
Wonder clips or pins

Fabric

Measuring tape

**Fabric requirements:**

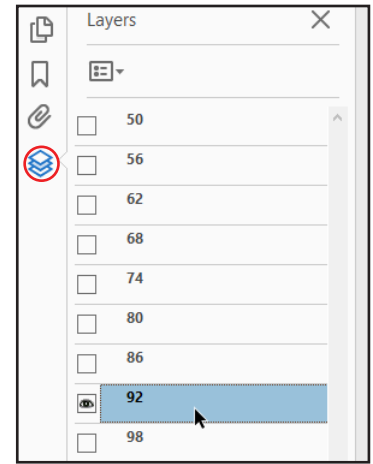
The pattern does not include seam allowance. The illustration below shows the pattern parts on folded fabric with a total width of 150 cm. Do not forget to take into consideration the extra seam allowance and shrinkage of the fabric if you order fabric according to these measurements. You will also need some fabric for bindings, lining for hood and pockets.



It is possible to print only certain sizes using the “layers” function in acrobat.

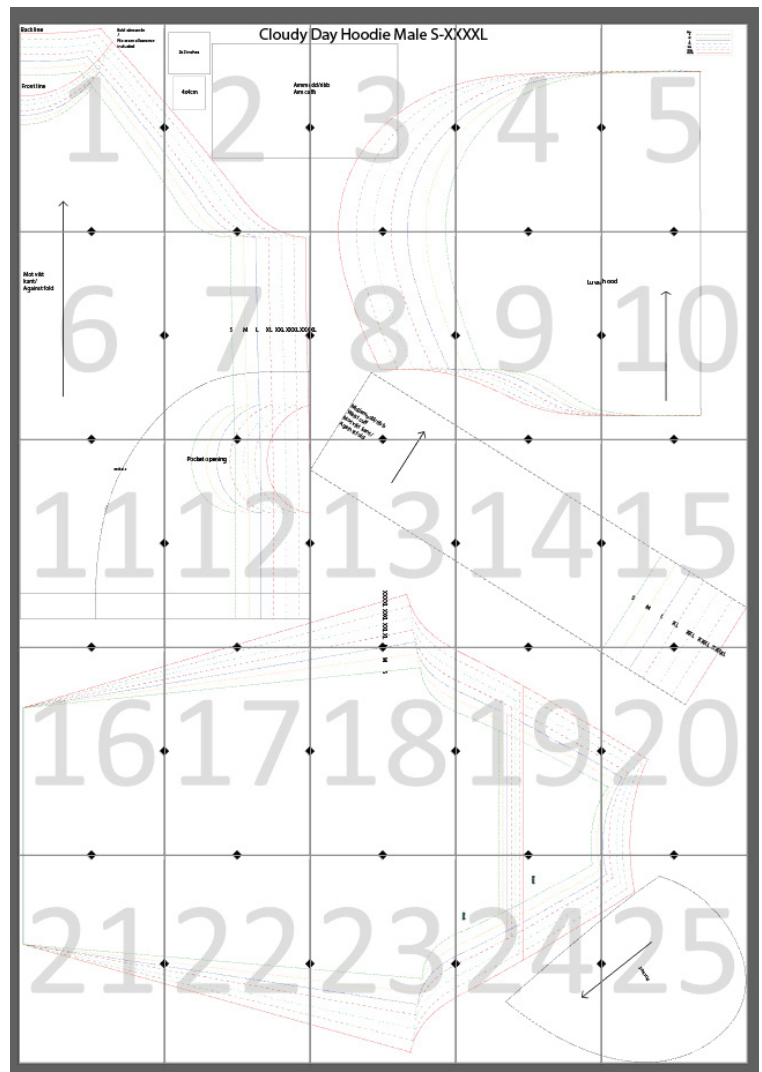
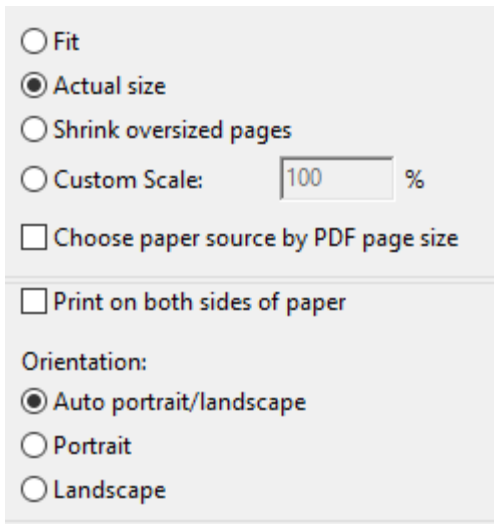
Select the “Layers” tab.

Unselect the sizes you do not want to print, leave the last layer selected.



When printing make sure your printer settings are set to “Actual size” and “Auto portrait/landscape”.

The files can be printed on Letter and A4



Tape the pattern together as shown to the right.

Tip: Cut of the top and left edge of each pattern piece.

Line up each line so the triangles meet and form a diamond.

Do not cut out pattern pieces before taping all of the pages together.

## European sizes (cm):

Size	S	M	L	XL	XXL	XXXL	XXXXL
Chest	92	100	108	116	124	132	138



Made by Runi

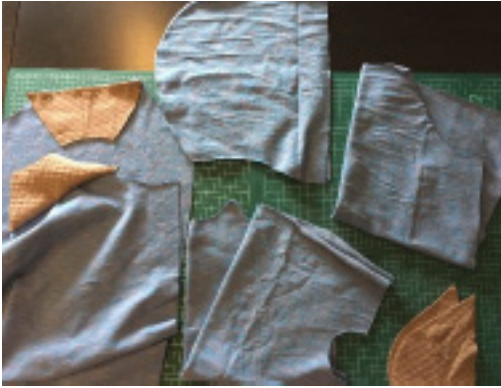
More photos of finished dresses and more of my designs are posted regularly on:

Instagram: @madebyruni (please tag #madebyruni when you post photos of your creations)

Facebook: <https://www.facebook.com/madebyruni/>  
<https://www.facebook.com/groups/madebyruni>

All my patterns are available for purchase at [www.madebyruni.com](http://www.madebyruni.com) several of them are also available as physical prints for those who prefer that.

More tutorials and options on: [www.patternsbyruni.wordpress.com](http://www.patternsbyruni.wordpress.com)

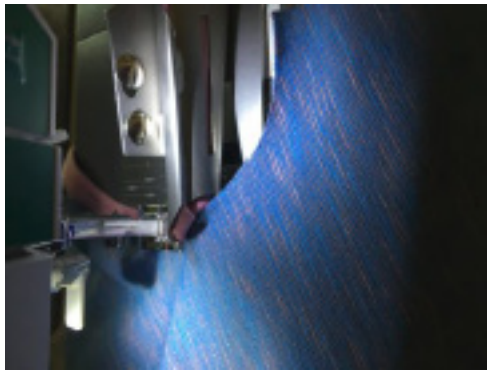


**Cut out all parts (do not forget to add seam allowance);**

- 2 front mirrored
- 1 back on the fold
- 2 sleeves

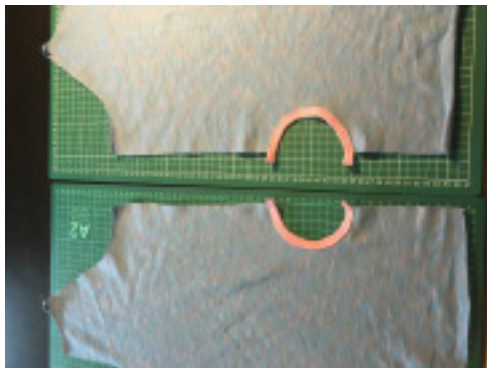
**Optional:**

- 2 hood pieces, mirrored and 2 lining pieces
- 2 shoulder pieces
- 2 pocket pieces, mirrored



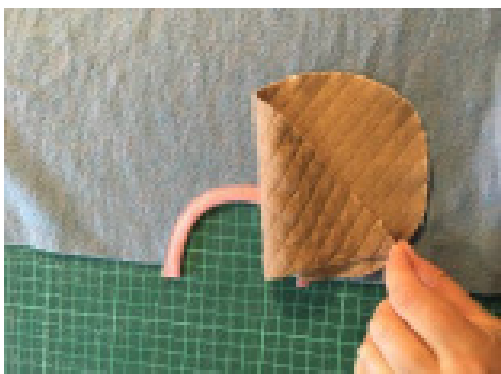
**Starting with pocket openings.**

Start with adding bindings to the pocket openings. For a guide on adding binding manually see page 9.



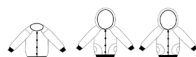
**This far.**

Both pocket openings have binding.



**Attaching pocket.**

Put the pocket in place, right side to wrong side. Measure from the binding edge to make sure that both pockets are at the same height. I like to glue the pocket in place while I sew. Use a decorative stretch stitch and sew from the wrong side, makes it easier to get the seams at the same place on both pockets.





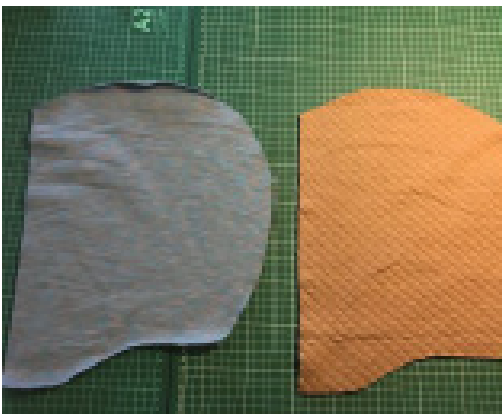
**Wrong side up.**

If you color blocked the sleeves, sew the shoulder pieces to the sleeves first. With the wrong sides up lay out all your bodice pieces as pictured. Pin the raglan sleeves to the front and back bodice pieces. Pin them right sides together.



**Sew raglan seams.**

After you have sewn it together it should look like this. Put this aside for now.



**Hood and lining.**

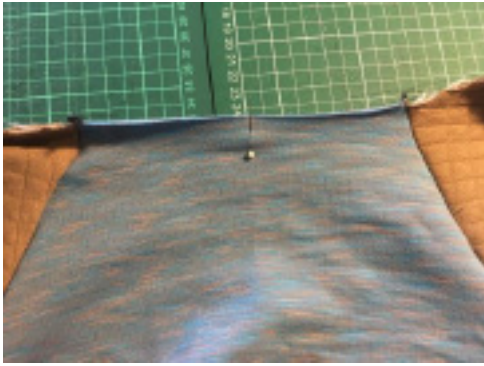
I chose to line the hood. I have 2 outer pieces and 2 lining pieces. put the outer pieces right sides together. Sew the outside seams, that would be the rounded edge. Repeat for the lining.



**Hood sewn together.**

Grab your bodice.





**Attaching hood to neck.**

Find the center back on your sweaters neck line and mark it.



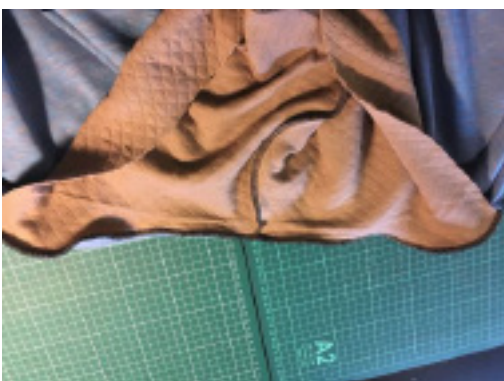
**Pin hood to neck.**

The outer fabric (on photo) is placed right sides together with the sweater, pin raw edges together.



**Lining.**

The lining for the hood is placed right side to wrong side of the sweater. The sweater should now be sandwiched between the lining and outer fabric of the hood.



**Sew.**

Sew the 3 layers together.





**Side seams.**

Right sides together, line up the seams at the arm pit, the sleeve and the bottom of the sweater.

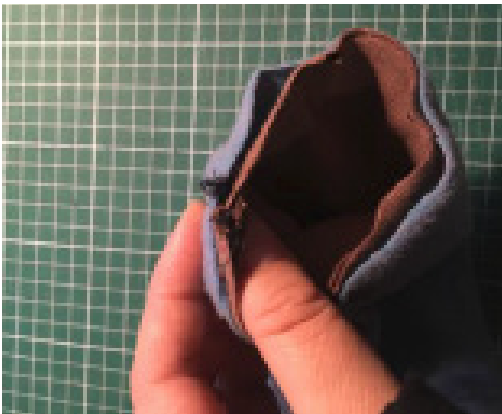
Sew the sleeve and side seams.



**Sew cuffs**

Now for the cuffs. Fold the sleeve cuff in half, right sides together and sew down the long side (the 2 smaller pieces on photo).

Then fold it in half so the seam is on the inside of the cuff.



**Sewing cuffs to sleeves.**

Put the cuff in the sleeve, right sides together, line up the seams. Pin to keep in place then sew.



**Attaching waist band.**

For the waist band, fold it wrong sides together. Find and mark the middle on both the shirt hem and the waist band







**Attaching waistband.**

Right sides together, with the raw ends meeting. Start with the middle pin, then the edges. After that it is just a matter of folding the sides to the middle, finding the next middle point, pin and so on until you are comfortable with the amounts of pins.



**Binding to front.**

With the sweater right side out it is now time for edge binding. I pin the hood so it does not move out of place. Then I start by the waist band on one side, all the way around to the other side.



**Binding.**

The little piece at the end i fold over to the wrong side and glue in place, then I just sew it down with a straight stitch. As you can see I've put something at the back of my presser foot. This is just to make it easier sewing the thick piece down.



**Placing buttons.**

Measure out where to place the buttons, about every 4 cm.





**Buttons finished.**

All buttoned up.



**Attaching zipper**

Image 1: Finished cardigan.

Image 2: Fold the little extra piece down towards the front of the zipper. Image 3: Use fabric glue on the zippers right/front side.

Image 4, Pin the zipper in place on both sides.

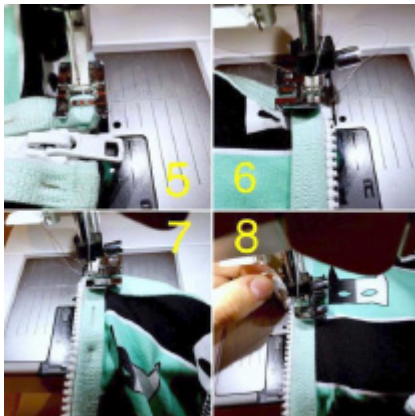


Image 5: Start with sewing the top down first, put something behind the presser foot to make it easier.

Image 6: Using your zipper foot, sew the zipper in place from the right side.

Image 7: Sew the other side, Open the zipper up a bit, sew about 15 cm.

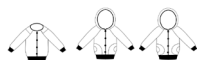
Image 8: With needle down, lift the presser foot and pull the zipper up past the foot, then continue sewing.



Image 9: Cut off the little extra piece of the zipper at the top. Image10: Shows how it looks after cutting it off.

Image11: Top stitch the outer end of the zipper down.

Image 12: How it looks on the wrong side after top stitching. Done!





**Classic edge binding.**

Start with measuring the pocket opening, hem or armhole depending on what you plan to attach binding to.



**Do some math.**

Mine measures 14cm (5.5")

Take your measurement and multiply with 0.8 (or 0.75 if it is a very stretchy fabric)

For me I get  $14 \times 0.75 = 10.5\text{cm}$  (size 92/2t)

So I cut 2 pieces that are  $10.5 \times 4$  (length\*height) since I am binding pocket openings.



**Pin and sew.**

With right sides together, pin the edges together first then stretch the band to fit and pin where needed. Sew together.



**Fold over.**

This will create a rather thin band, I will show a different way I do when I want a wider band on the next page.

Pin in place and sew using a stretch stitch. I like to use a ordinary small zig zag.





**Clean up.**

Cut off the excess fabric (or next time remember to cut about 3 cm instead for this one).

Check out your awesome handy work and move on to sewing the pockets or side seams.



**For a wider band.**

Before I fold over I just use a straight stitch at the width I want the finished band to be.



**Fold over.**

The result is this after folding over. Sew using a stretch or decorative stitch as before.



**Finished!**

