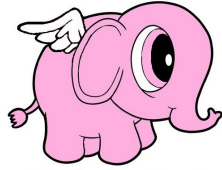


T-Shirt Child size 80-164 tutorial



Made by Runi



About the pattern:

This pattern includes sizes 80-164 (European sizes). It is a very basic model with only 2 pattern pieces.

Legal:

When you buy a pattern, you are entering a personal agreement with Made By Runi / Runi Arntsen. You are not permitted to share or sell purchased PDF patterns in any way. You who have purchased the pattern may use it for personal and small scale commercial use. Small home based businesses are allowed to sell finished items made from this pattern, I want you to write that it is a Made By Runi pattern if you use my patterns. You may produce on a small scale but do not ask another person/company (mass production) to produce for you.

If something feels unclear, please feel free to contact me at
www.facebook.com/madebyruni

Thanks! Greetings Runi

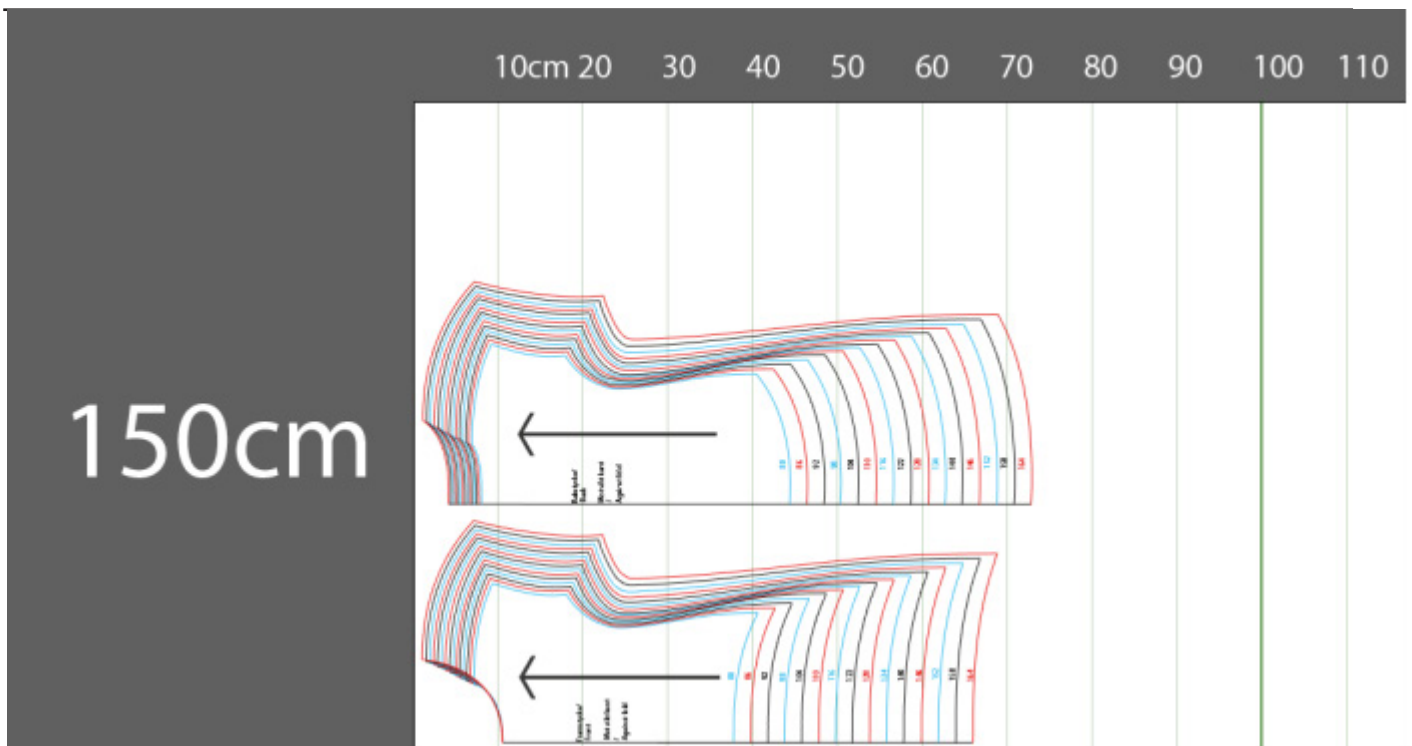
Material:

I recommend using cotton knit fabric for this pattern.

It is possible to use interlock or french terry as well, but the pattern is made for cotton knit primarily so you may have to adjust accordingly.

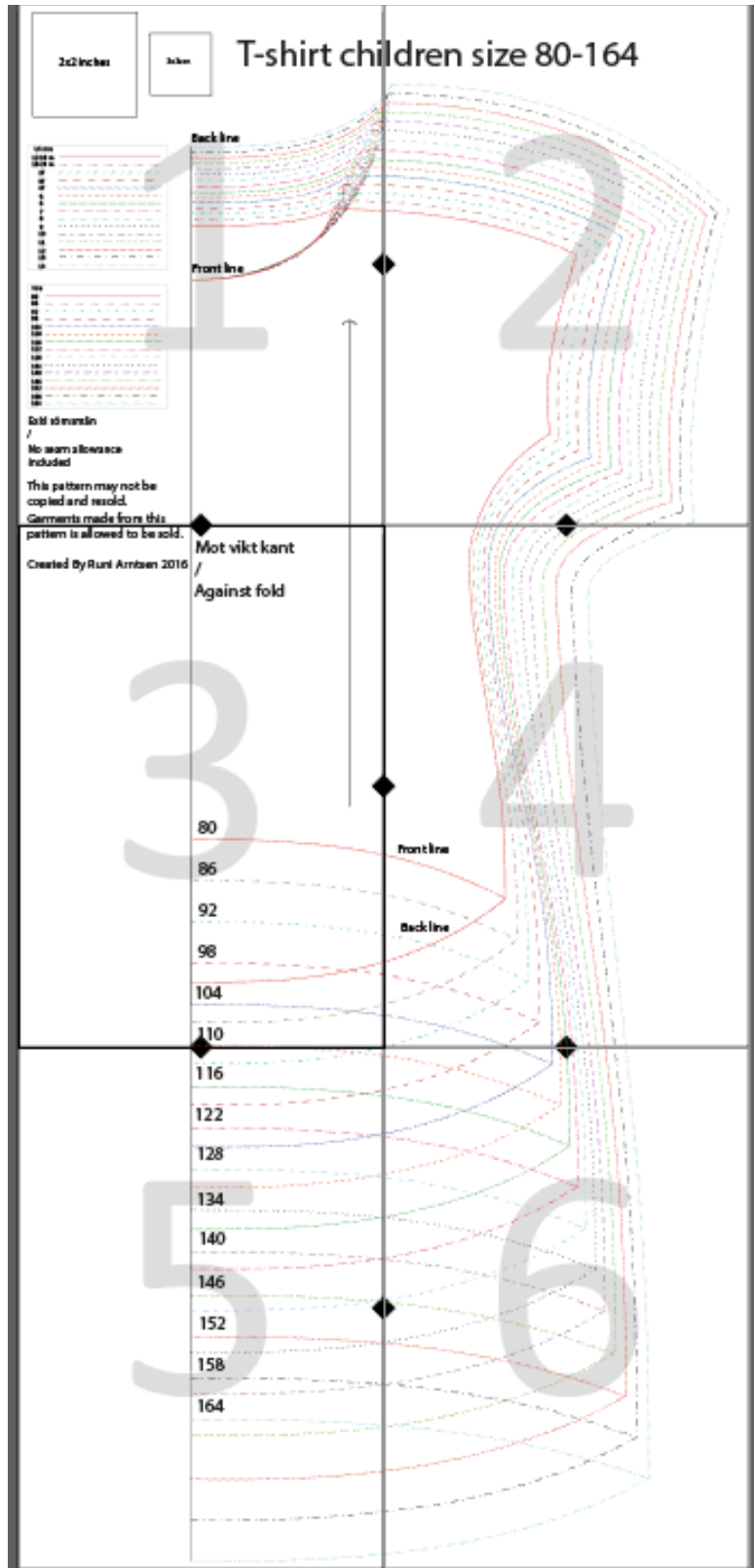
Material usage:

The pattern does not include seam allowance and in the illustration below you see the pattern parts on folded fabric with a total width of 150 cm. Do not forget to add seam allowance and shrinkage of the fabric if you order fabric according to these measurements. The pattern is made for adding binding, if you want to hem add for that. If you do not want a curved bottom just dra a straight line from the side seam.



Printing:

Print the document in actual size and check so that the control square is the correct size. There are marked cut lines that should align against each other so that the pattern lines meet. Tape the pattern as shown in the picture below. Each size has its own color and "pattern" on the line so it's ok to print in black and white too, but it's easier to print in color.



Getting started:

Start with tracing the size you're going to sew. Since people vary in the amount of seam allowance they are comfortable with, I've chosen not to include any in the pattern and let you decide. Add seam allowance where you will sew together two pieces. Do not add allowance where you're going to add binding.

I usually have a seam allowance of 0.6 cm since I use a serger with a seam that's 0.5cm wide.



Cutting:

Cut out the pieces you need for the chosen size. Both front and back should be cut on the fold.

(Photo on the left)

You should have these two pieces now. Put them right sides together and sew one of the shoulder seams together. Sew on the neck binding and then sew the other shoulder seam.



Add binding to the sleeves and then sew one of the side seams. Add binding to the bottom (or hem if you wanted that) and sew the last side seam.

You are done. Super fast and easy T-shirt :)



More photos of finished dresses and more of my designs are posted regularly on:

Instagram: @madebyruni (please tag #madebyruni when you post photos of your creations)

Facebook: <https://www.facebook.com/madebyruni/>
<https://www.facebook.com/groups/1153517751347356/>

All my patterns are available for purchase at www.madebyruni.com several of them are also available as physical prints for those who prefer that.

More tutorials and options on: www.patternsbyruni.wordpress.com



