

Raglan dress with a twist size 80-164 tutorial



Made by Runi



About the pattern:

Sizes 80-164 (European) are included in the pattern also included are several options for the sleeve, pockets, 3 different skirts. There's also optional collars (high & low) or a hood.

Legal:

When you buy a pattern from Made by Runi you're entering a personal agreement with Made by Runi / Runi Arntsen.

You are not permitted to in any way share or re-sell a bought pdf-pattern.

Of course you are permitted to buy the pattern for someone else, in those cases the agreement transfers to the recipient.

As an example, if let's say your grandmother wants the pattern (or you want her to have it) you're of course allowed to buy and print it out for her.

I permit commercial use in a small scale.

To clarify, if you have a small business (sew on your own) you do not need any additional permits to produce clothes from the pattern to sell, all I ask is that you in some way mention that it is from a Made by Runi pattern.

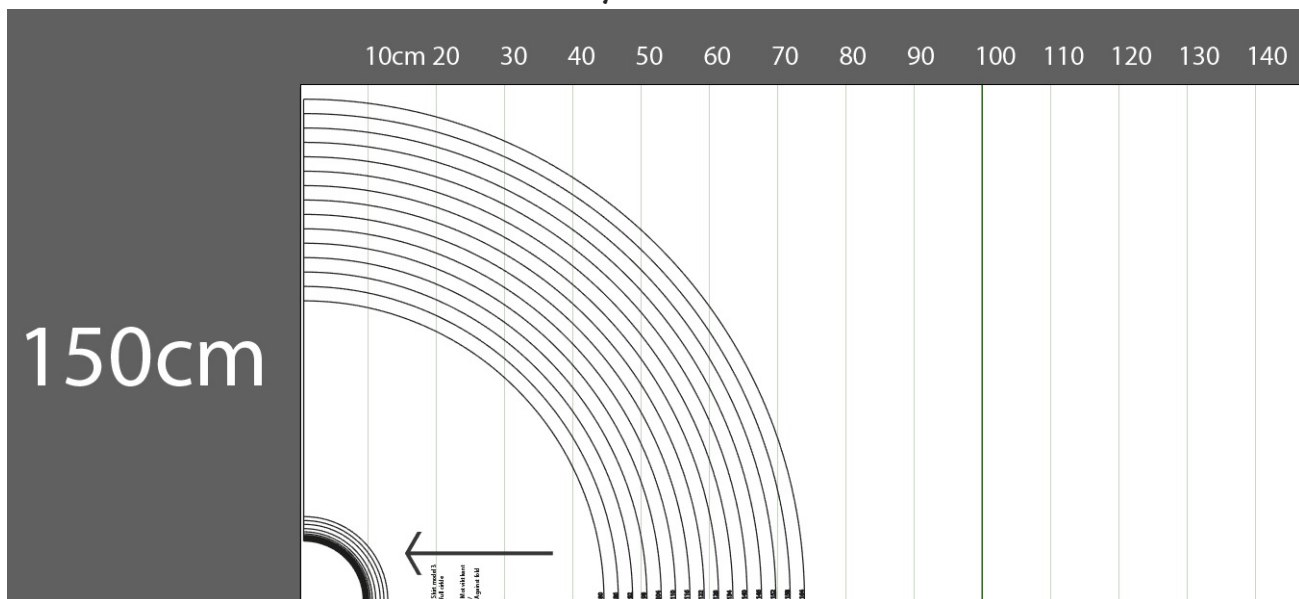
Material:

I recommend using cotton-jersey knit for this pattern.

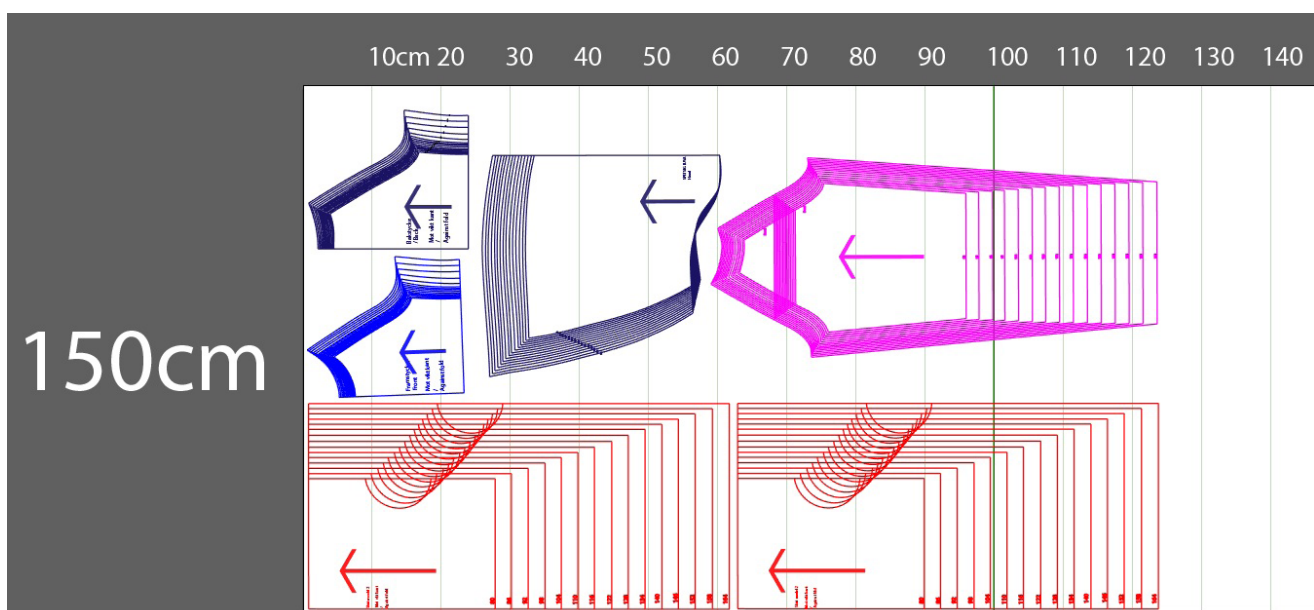
It's possible to use interlock and probably suede as well, but the pattern is made for cotton-jersey primarily so you may have to adjust accordingly.

Material usage:

I haven't added seam-allowance in the pattern, and the illustration below shows the pattern parts on folded fabric with a width of 150 cm. Don't forget to take seam-allowance and shrinkage in consideration if you order fabric after the pattern measurements. The length of the skirts are drawn for trim or lace, if you will use hem, add for that.

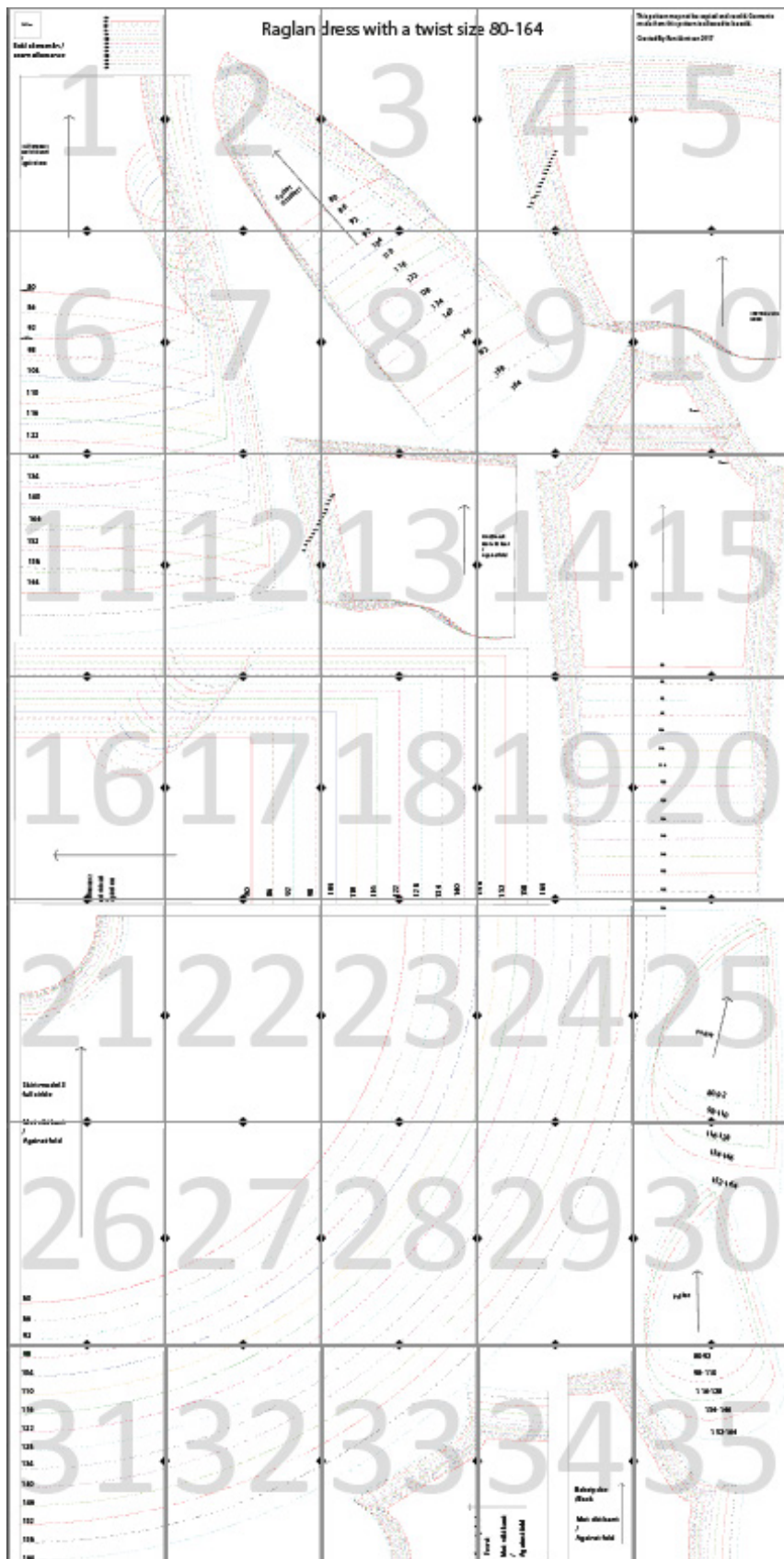


Remember that all skirt parts are to be cut twice when you consider how much fabric you need. Hood or collar are to be lined and you need fabric for pockets.



Printing:

Print the document in actual size and check that the control square is at the exact right size. There are marked cut-lines on the printed papers, it's important that you remove the excess paper. Assemble the pattern as depicted below, tape is your friend ;) Every size has it's own colour on the pattern to make it easier to trace. It's possible to print in b&w but harder to trace.

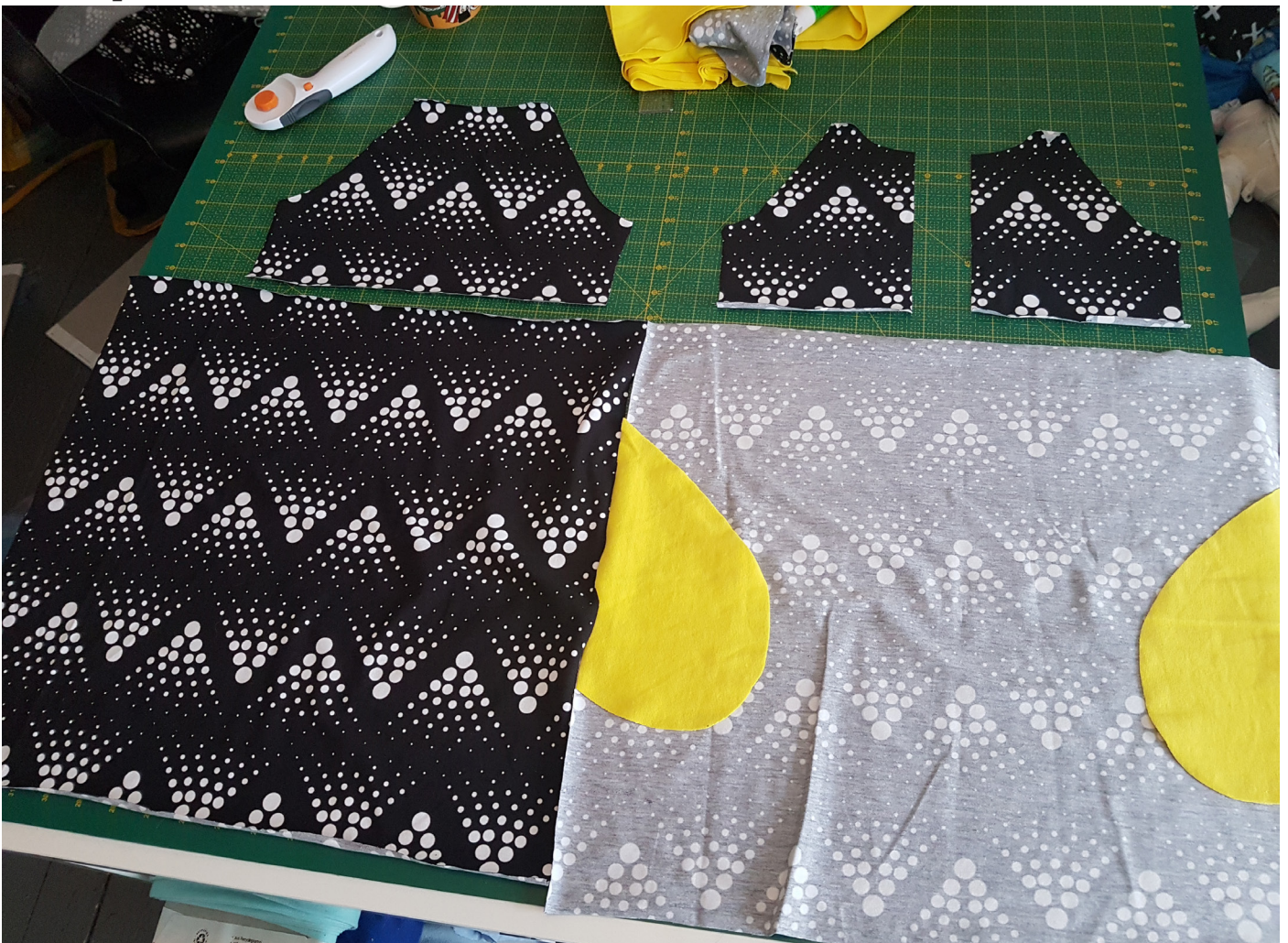


Sewing:

Start with tracing the size you're going to sew. Since people vary in the amount of allowance they are comfortable with, I've chosen not to add any and let you decide for yourself. Add allowance where you are going to sew together two pieces. Do not add allowance where you're going to trim.

I usually have an allowance of 0.6 cm since I usually use a serger with a seam that's 0.5cm wide.

In this tutorial I've chosen to show the version with gathering on the skirt, since the way you attach the bottom pieces is the same regardless of which version you pick. If you want to split the front piece as I have, you need to put the front piece a bit further away from the folded edge, because it is necessary with a bit of extra fabric when you later on will put the edged parts on top of each other to attach the snap buttons.



The hood needs lining and "outer fabric". If you want to "split" the sleeve you'll need fabric for that as well. I think it looks good with all the details in the same colour, but you could really mix & match however you like. For the hood you need 2 parts for the lining and 2 for the outside.



I always start with the pockets, since I find it easier to attach them when there isn't a bunch of extra fabric pieces sewn together. I use glue (the school glue stick type) instead of needles. I've done this for several years without any issues, so you really don't need expensive prym-glue.



I sew with a cover machine, but you can sew just as good with a regular sewing machine, just pick a stretchy decorative stitch to sew the pocket. I stitch the pocket and trim the openings. On the photo the pockets ended up a little bit further down than usual (couldn't find my ruler ;)) I usually have the top of the pocket about 3-4cm above the opening of the pocket. It doesn't matter in which order you do things here, trim before or after you attach the pocket, it works just as well.



When the pockets are finished I start with the sleeves.

The shoulder peices are stitched right against right on the actual sleeve. Don't forget to add seam allowance.



Sew the seams between front piece and arms. Right sides together. Remember that the front piece of the arms, has the shortest lengths from armpit to shoulder.



Sew the seam between back piece and arm.
This is how it should look like then.



Then we'll sew the hood. Sew the hoods parts right sides, as in the picture. Upper seam and rear seam will be sewn together.



Put the hoods lining fabric right side against wrong side together so that the neck opening goes in between the two layers.



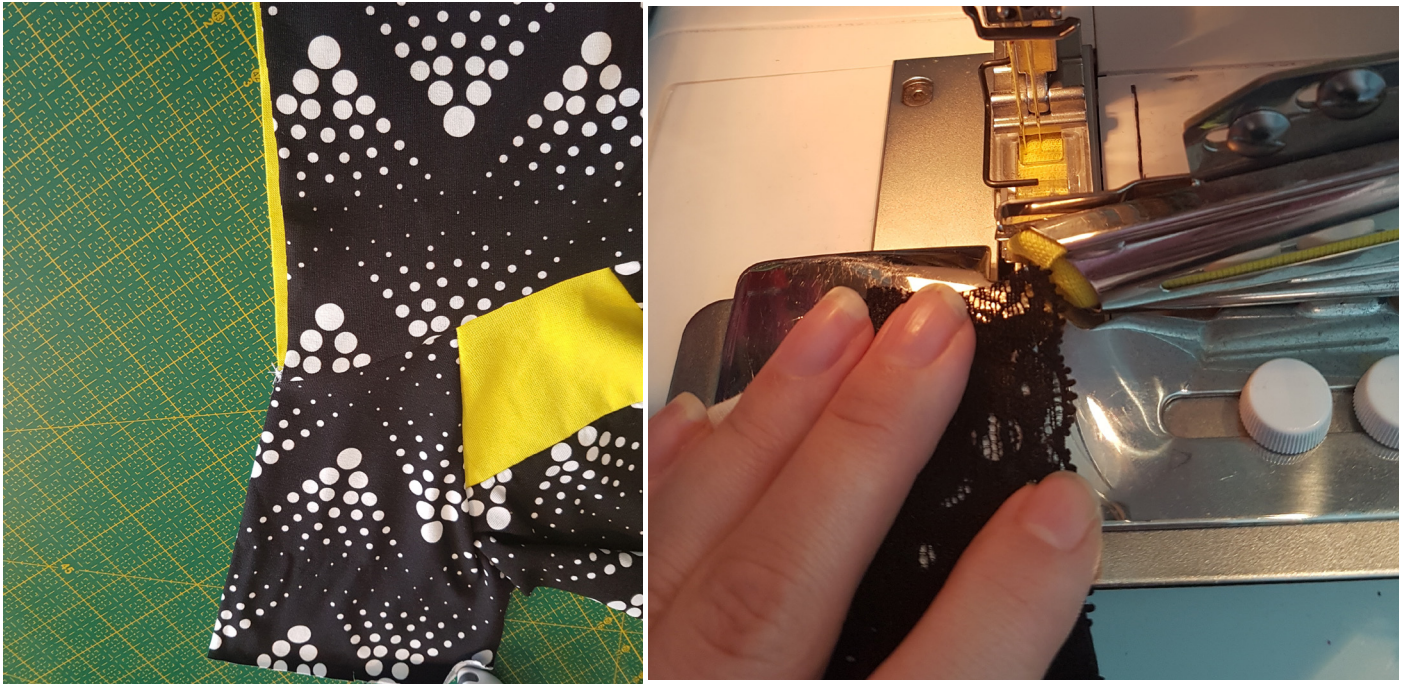
The stitching should then end up inside the hoods parts as a turn-stitched seam in the neck instead of a raw edge.



I recommend to double-check that all layers got included in the seam before you move on to the next step, because it is not very funny to find a hole at the neck seam when you are finished with the rest and must scratch up all seams.



Next, the edging of the opening. I use a bias tape binder, you can make it manually instead if you don't have one. There are many good tutorials on how to do that, if you google "tutorial bias tape binder" (for knits). I love to add lace to my garments, and if you want it in the edge of the hood, you can add it together with the fabric as I show in the picture. I start down at the edge of the left front and continue around the hood. I usually make the edging of the arms now as well.



Now I put one side of the bindings on top of the other, and sew some stitches across on the seam allowance, just to hold it in place when I will sew the waist-seam. If you chose to sew the twirl skirt or A-line, you can sew that pieces right on now, but if you chose the gathered one, you need to do some more work first.



To make the gathered one, begin with sewing straight, long stitches right on top of the skirt. Some people prefer to make two seams between each other, and then sew the parts together right in between those seams, but I think it works just fine with just one seam.



Tie a knot on one side of the threads, and then pic up the bottom thread on the other side, and pull carefully to make wrinkles.



The easiest way to check that you have pulled the thread enough to get the right length of the skirt piece is to simply put the piece against the top piece to make sure they are equally long. when they match, you adjust the wrinkles evenly across the fabric, tie another knot on the loose threads to make sure they stay in place. Then sew the pieces together.



Make this on both front -and back piece. when this is done, the rest of the sewing is made in the same way for all types of skirts.



Next step is to sew one side of the dress. begin at the end of the arm and sew all the way to the end of the dress. when this is done, hem the dress as you like, by folding it, sew edgings or sew on lace.



Now, sew the other sideseam of the dress, and you're done!



Here are a couple of pictures of different dresses, you can also find a lot more at:

Instagram: @madebyruni (Please use #madebyruni when you share pictures of clothes made by my patterns)

Facebook: <https://www.facebook.com/madebyruni/>
<https://www.facebook.com/groups/1153517751347356/>

All my patterns are available at www.madebyruni.com and many of them also come as actual pattern sheets if you prefer that above PDF-files. More tutorials and other options to the patterns are available at www.patternsbyruni.wordpress.com





@bacool_sweden



@bacool_sweden