

Every day dress size 34-54 tutorial



Made by Runi



About the pattern:

This pattern includes sizes 34-54 (European sizes). It is a very simple pattern with front, back and pocket pieces. You can choose from 2 different models on the pockets.

Legal:

When you buy a pattern, you are entering a personal agreement with Made By Runi / Runi Arntsen. You are not permitted to share or sell purchased PDF patterns in any way. You who have purchased the pattern may use it for personal and small scale commercial use. Small home based businesses are allowed to sell finished items made from this pattern, I want you to write that it is a Made By Runi pattern if you use my patterns. You may produce on a small scale but do not ask another person/company (mass production) to produce for you.

If something feels unclear, please feel free to contact me at madebyruni@live.se

Material:

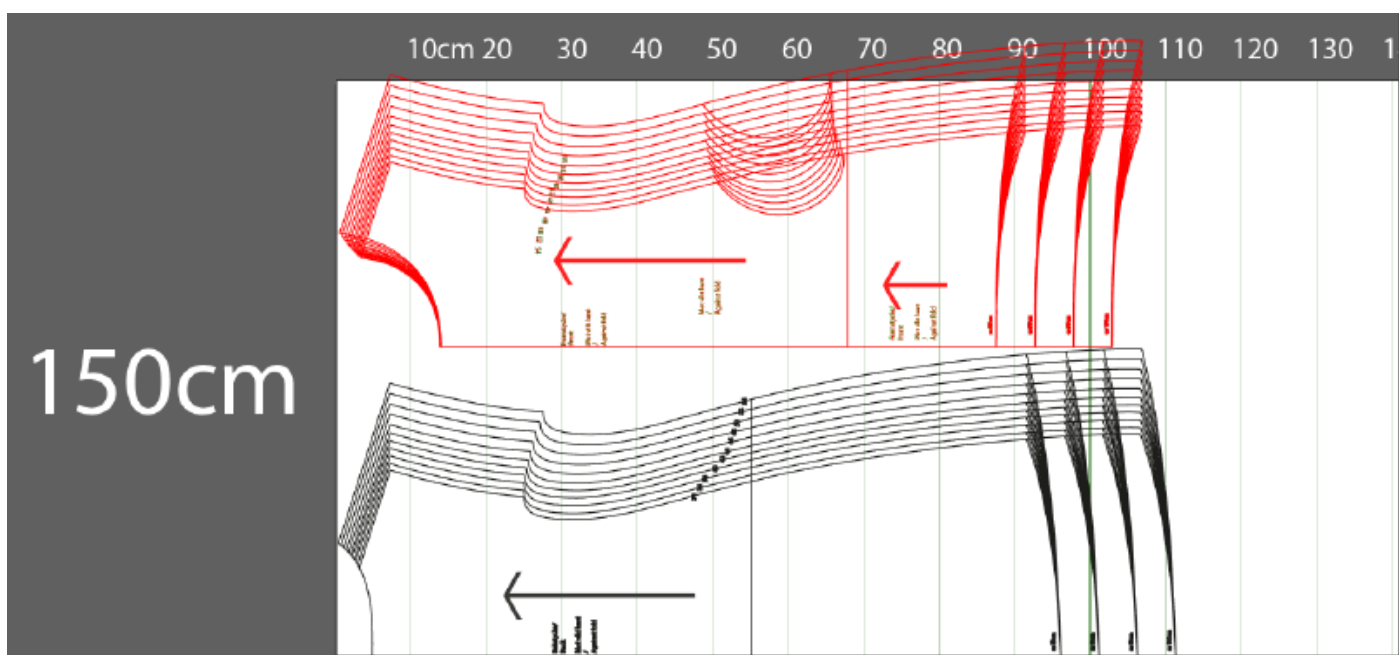
I recommend using cotton knit fabric for this pattern.

It is possible to use interlock or french terry as well, but the pattern is made for cotton knit primarily so you may have to adjust accordingly.

Material usage:

The pattern does not include seam allowance and in the illustration below you see the pattern parts on folded fabric with a total width of 150 cm. Do not forget to add seam allowance and shrinkage of the fabric if you order fabric according to these measurements. Besides this, any pockets and bindings may apply. Here you can see all the different parts and the size they are in centimeters.

As you can see the largest sizes do NOT fit on the width of this fabric. So either double the amount of fabric or find fabric that is wider than 150cm.



European sizes (cm):

Size	34	36	38	40	42	44	46	48	50	52	54
Bust	80	84	88	93	96	100	104	110	116	122	128
Waist	65	69	73	77	81	85	89	95	101	107	113
Hip	88	92	96	100	104	108	112	117	122	127	132

US Sizes (inches):

Size	4	6	8	10	12	14	16	18	20	22	24
Bust	31	33	35	37	38	39	41	43	45	48	50
Waist	25,5	27	28,5	30	32	33,5	35	37	39,5	42	44,5
Hip	34,5	36	38	39,5	41	42,5	44	46	48	50	52

If you want a slimmer fit choose a size smaller than your measurements.

Getting started:

Start with tracing the size you're going to sew. Since people vary in the amount of seam allowance they are comfortable with, I've chosen not to include any in the pattern and let you decide. Add seam allowance where you will sew together two pieces. Do not add allowance where you're going to add binding. I usually have a seam allowance of 0.6 cm since I use a serger with a seam that's 0.5cm wide.

I always draw the seam allowance directly on the pattern parts so I don't forget it.

Here you can see where there will be seam on this pattern. The side seams on the pockets should have seam allowance but not the rest.

There are 2 different models off pockets and you can choose which one you want.



This tutorial uses the photos from the child version.

If you would like a color blocked dress on the adult version measure from the shoulder seam, over the bust and stop under your bust.

Cut the pattern of at this measurement, add seam allowance (to both pieces).



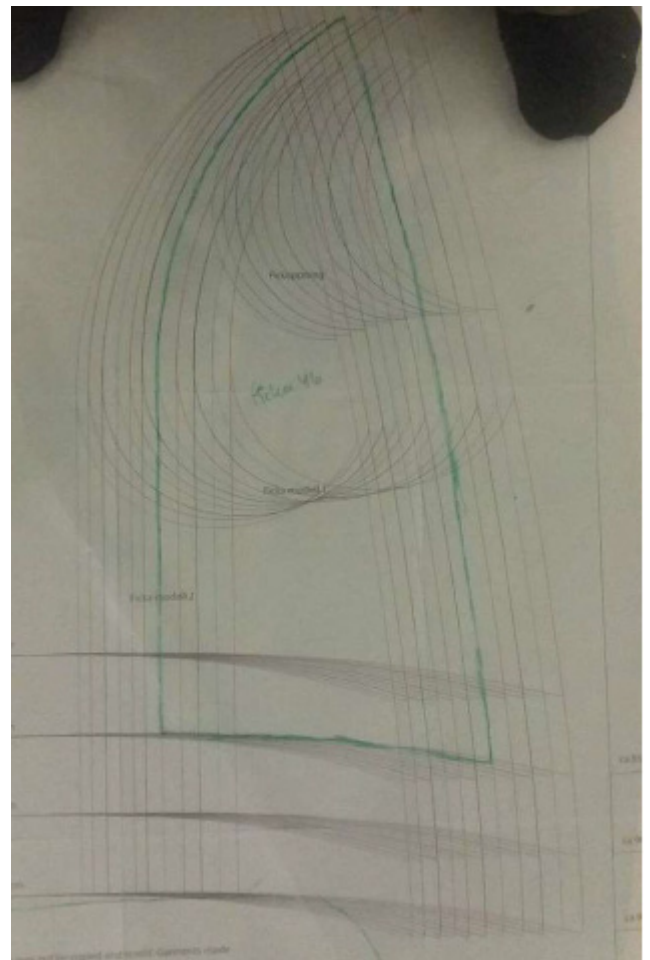
To trace the pockets:

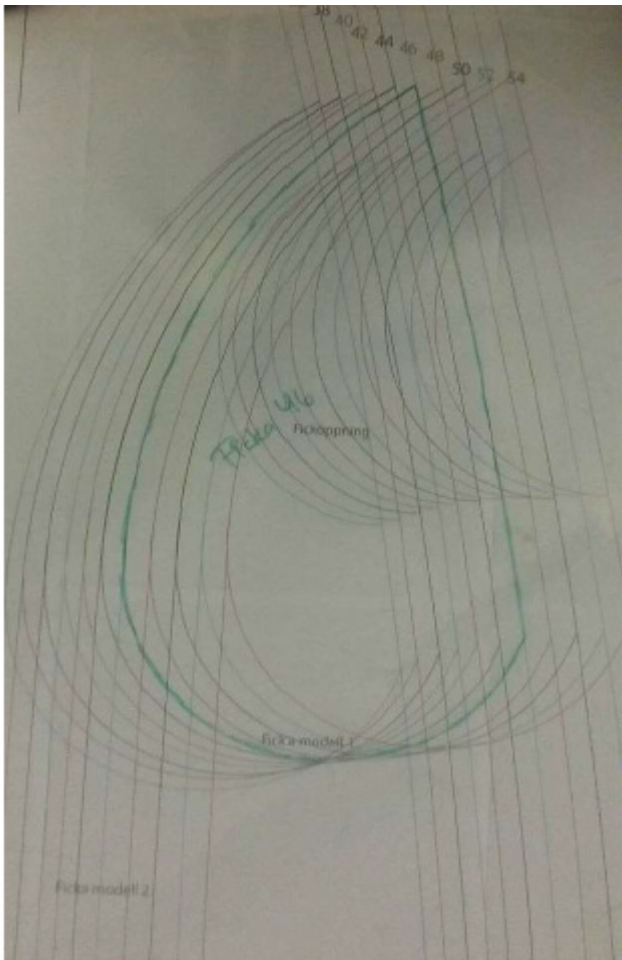
For the pocket openings just follow the side seam of the dress and choose the line for the size. It's this, half circle, line that is the opening for the pockets.

(Photo on the left)

If you want the pocket that's used on the blue child dress used for this tutorial then trace the lines for pocket 2. Just follow the chosen length and follow the edge line and side seam of the dress.

(Photo on the right)





If you want the drop shaped pocket (like the purple dress on the first page) just follow the lines for the chosen size.

(photo to the left)

Both front and back pieces should be on the fold as in the picture.

If you do not want to color block the bodice, you can either draw the parts together or do as I have done here. Then I just put the pattern parts over each other so no seam allowance are added to them.



Sewing:

I always start with the pockets. To make things easier I use glue (the school glue stick type) instead of needles. I've done this for several years without any issues, so you really don't need expensive brand name glue. Put some glue on some spots to keep the pockets in place, and then sew in place



Then I add edge binding to the pocket opening. It should now look something like this (depending on what sewing machine and stitching you used to sew on the pockets).



If you choose any of the other pocket types I usually make sure that the top of the pocket is about 2.5-3cm above the opening. If you measure this out you also make sure they end up at the same height.



On the option where you chose the color blocked bodice I now sew together the bodice with the skirt. Just place the bodice right sides together on the skirt and sew. Do this for both the front and back piece.

Then I topstitch the seam between the bodice and the skirt. This is optional, but it makes a nicer finish.

I use a slightly longer straight stitch so the fabric can stretch a little without the seam breaking. You can also use a cover stitch or a decorative stitch for this.



Now it is time to sew the dress together. I always start with one shoulder seam, then I add neck binding before I sew the other shoulder seam. After that I can add edge binding to the sleeves.



After I've added binding to the neck and sleeves I sew one of the side seams. I then add edge binding to the skirt. Now just sew up the last side seam and you are done.



More photos of finished dresses and more of my designs are posted regularly on:

Instagram: @madebyruni (please tag #madebyruni when you post photos of your creations)

Facebook: <https://www.facebook.com/madebyruni/>
<https://www.facebook.com/groups/1153517751347356/>

All my patterns are available for purchase at www.madebyruni.com several of them are also available as physical prints for those who prefer that.

More tutorials and options on: www.patternsbyruni.wordpress.com