

Basic Romper/dress size 50-110 tutorial



Made by Runi



About the pattern:

This pattern includes sizes 50-110 (European sizes). Options included are: Romper or dress version, pockets, optional snaps on legs.

Legal:

When you buy a pattern, you are entering a personal agreement with Made By Runi / Runi Arntsen. You are not permitted to share or sell purchased PDF patterns in any way. You who have purchased the pattern may use it for personal and small scale commercial use. Small home based businesses are allowed to sell finished items made from this pattern, I want you to write that it is a Made By Runi pattern if you use my patterns. You may produce on a small scale but do not ask another person/company (mass production) to produce for you.

If something feels unclear, please feel free to contact me at madebyruni@live.se

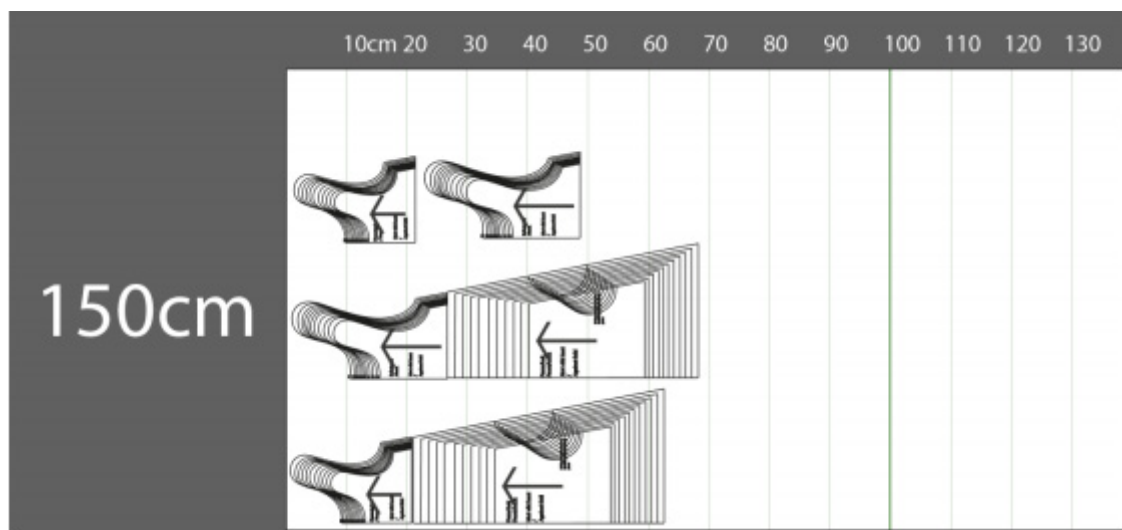
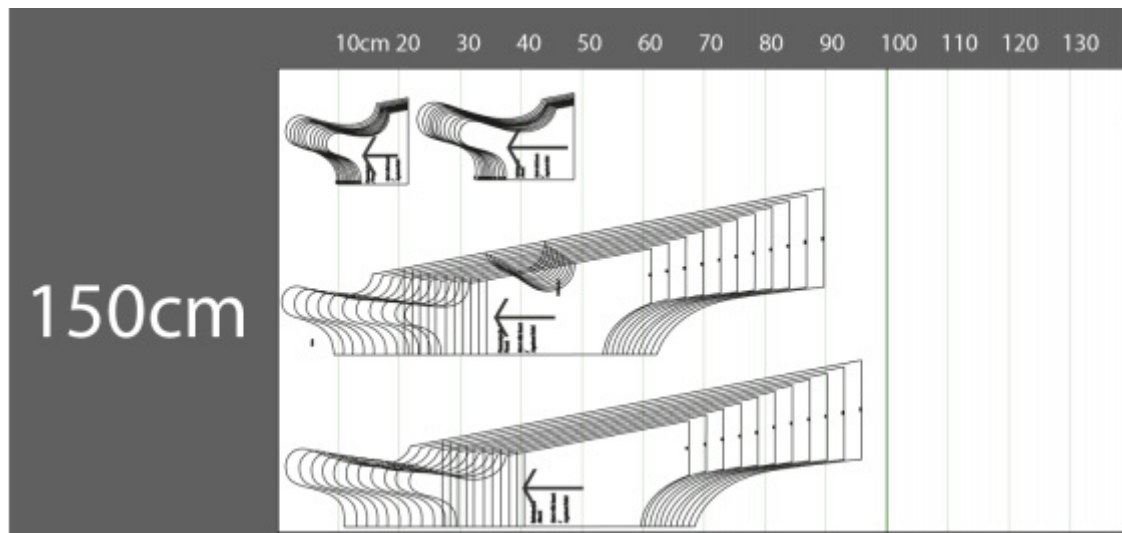
Material:

I recommend using cotton knit fabric for this pattern.

It is possible to use interlock or french terry as well, but the pattern is made for cotton knit primarily so you may have to adjust accordingly.

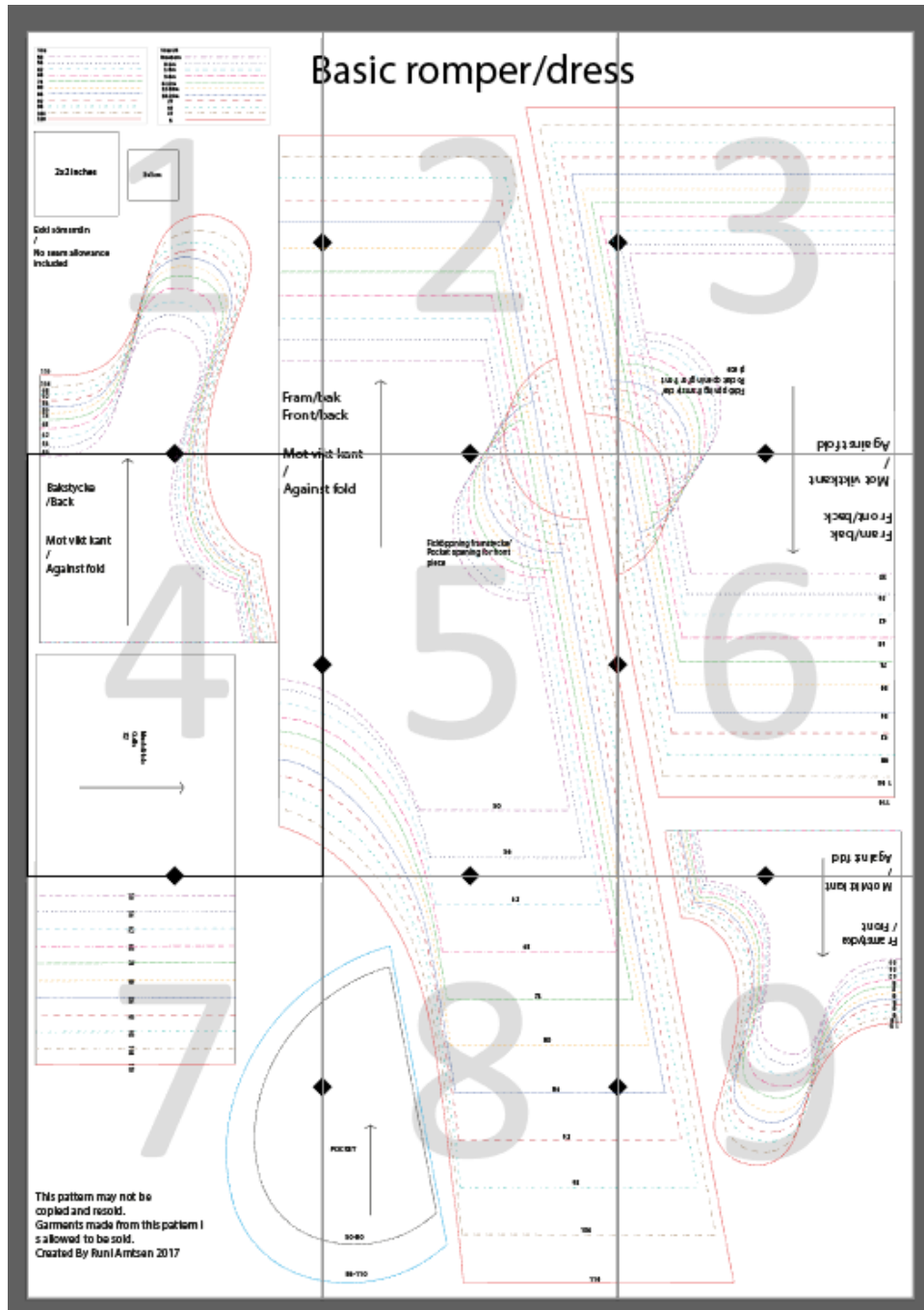
Material usage:

The pattern does not include seam allowance and in the illustration below you see the pattern parts on folded fabric with a total width of 150 cm. Do not forget to add seam allowance and shrinkage of the fabric if you order fabric according to these measurements. Besides this, any pockets, cuffs and bindings may apply. Here you can see all the different parts and the size they are in centimeters.



Printing:

Print the document in actual size and tcheck so that the control square is the correct size. There are marked cut lines that should align against each other so that the pattern lines meet. Tape the pattern as shown in the picture below. Each size has its own color and "pattern" on the line so it's ok to print in black and white too, but it's easier to print in color.



Getting started:

Start with tracing the size you're going to sew. Since people vary in the amount of seam allowance they are comfortable with, I've chosen not to include any in the pattern and let you decide. Add seam allowance where you will sew together two pieces. Do not add allowance where you're going to add binding. I usually have a seam allowance of 0.6 cm since I use a serger with a seam that's 0.5cm wide.

I always draw the seam allowance directly on the pattern parts so I don't forget it.

Cutting:

Cut out the pieces for the version you want. I will show the color blocked version here. I want to make a lined bodice so I've cut out 2 front and 2 back pieces, as well as 2 pants pieces and 2 cuffs for the legs.



Sewing:

On this specific romper, I wanted to add lace between the bodice and pants, so I will show how I do that as well. Just place the top and bottom right sides together, with the lace sandwiched in between and sew.



I then top stitch the lace in place with a long straight stitch.



Do the same for the back pieces but do not add the lace there. Don't forget right sides together.

To sew the lining on, I place it right sides together with the top and sew all the way around (See the red lines)



Do the same on both the front and back pieces. Then turn them right side out and top stitch if you want.



Sorry for the change in fabric/garments from now on. I had better pictures on a different one.

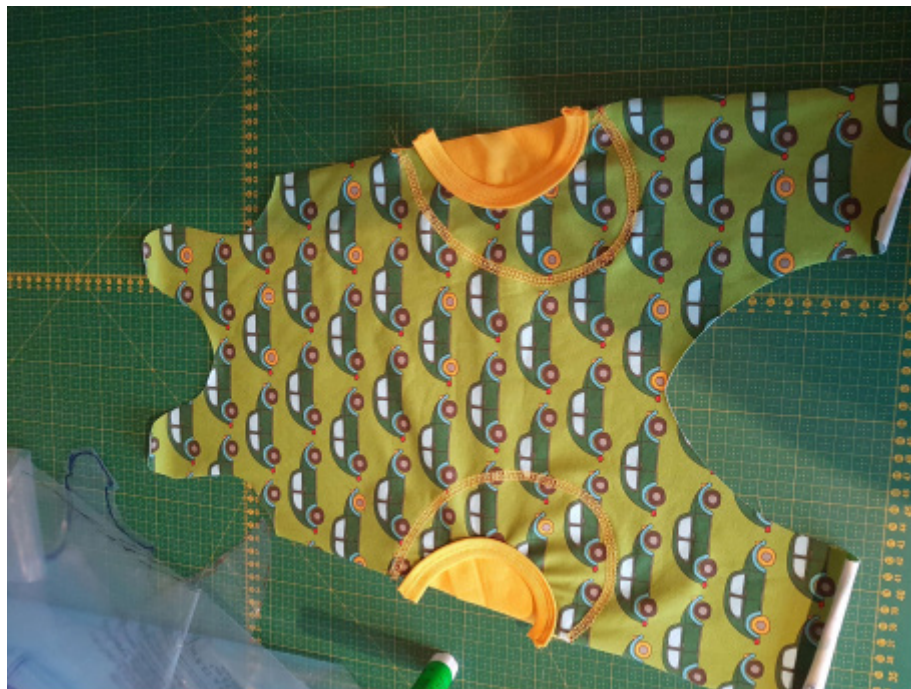
If you want pockets it s easier to add them now before we sew the front and back pieces together.

I use glue to keep the pockets in place when I sew, just glue it down on different spots. Sew and then add binding to the pocket opening.



It should look something like this.

(I have change the pocket a bit since I sew this piece)



Now it is time to sew the side seams. Put one side like the photo shows, you need to sew lining to lining and not with the side seams. Put the other piece right sides together on top.



Then sew the side seam like I have done in the photo. You can sew a few stitches on the side seam to keep the lining in place. Some fabric likes to roll the edge a lot after laundry, you can avoid this by serging the bottom of the lining before you sew it to the bodice.



If you do not want to add snaps to the crotch seam, just sew the seam and sew the cuffs on.

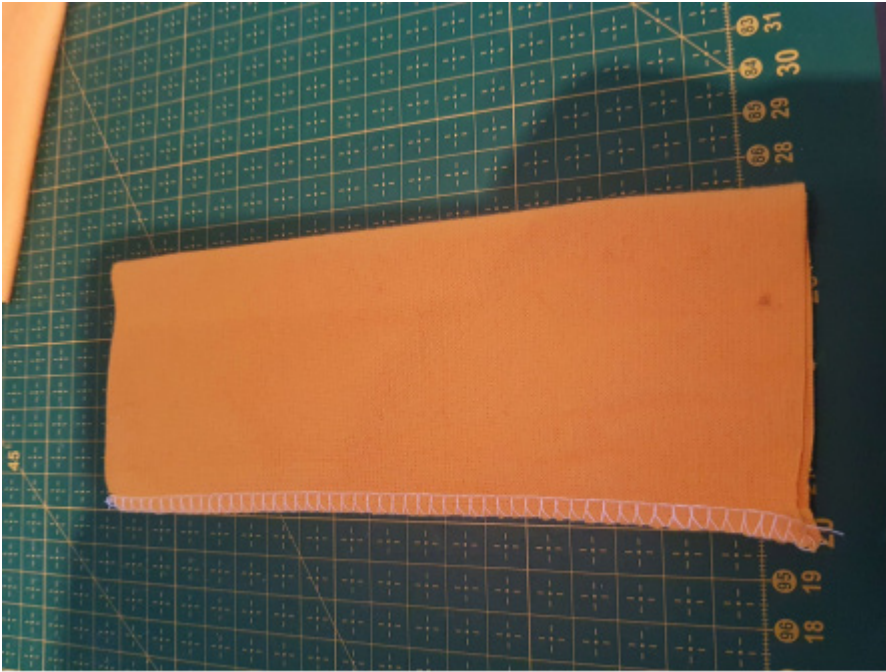
If you want to add edge binding to the crotch then you need to add a little to the back piece, since the pieces will overlap a bit and you will lose about 1 cm to the length if you don't.

Then just add binding to both the front and back piece.



I like to sew the bindings together at the end before I add the cuffs just to avoid them sliding apart.





The cuffs are sewn right sides together.



Then fold in half.



Place the cuff inside the leg, right sides together and sew.

Then just add snaps to the crotch and shoulders and you are done.

If you want to add binding to the neck you can skip the lining, but you need to reinforce where you add the snaps. You can add small patches like this, and use interfacing or a bit of woven between.



Then just add binding and sew the side seams together.



More photos of finished dresses and more of my designs are posted regularly on:

Instagram: @madebyruni (please tag #madebyruni when you post photos of your creations)

Facebook: <https://www.facebook.com/madebyruni/>
<https://www.facebook.com/groups/1153517751347356/>

All my patterns are available for purchase at www.madebyruni.com several of them are also available as physical prints for those who prefer that.

More tutorials and options on: www.patternsbyruni.wordpress.com



This is how it looks with color blocking and lace.



This one is top stitched.

